

## TRAFFIC UPDATE - Farrington Highway

### Week of January 8, 2017

#### WAIPAHU

**Monday, January 9 to Saturday, January 14, 2017**

**\*Please note all left-turn and intersection closures mentioned below will not conflict with closures at adjacent intersections.**

**LOCATION: Old Fort Weaver Road to Leoku Street**

**Daytime: 7 a.m. to 3:30 p.m., Monday to Saturday**

One alternating lane of westbound Farrington Highway will be closed.

**Daytime: 8:30 a.m. to 5:30 p.m., Monday to Saturday**

One inside lane of eastbound Farrington Highway will be closed. The inside left turn lane on eastbound Farrington Highway at Leoku Street will be closed. One turn lane will remain open.

**LOCATION: Leoku Street to Leokane Street**

**Daytime: 7 a.m. to 3:30 p.m., Monday to Saturday**

One alternating lane of westbound Farrington Highway will be closed.

**Daytime: 8:30 a.m. to 3:30 p.m., Monday to Saturday**

One inside lane of eastbound Farrington Highway will be closed.

**Nighttime: 7 p.m. to 5 a.m., Monday to Saturday**

Alternating lanes of eastbound and westbound Farrington Highway will be closed.

**LOCATION: Leokane Street to Pupukahi Street**

**Daytime: 7 a.m. to 3:30 p.m., Monday to Saturday**

One alternating lane of westbound Farrington Highway will be closed.

**Daytime: 8:30 a.m. to 5:30 p.m., Monday to Saturday**

One alternating lane of eastbound Farrington Highway will be closed.

**Nighttime: 7 p.m. to 5 a.m., Monday to Saturday**

Alternating lanes of eastbound and westbound Farrington Highway will be closed.

**LOCATION: Pupukahi Street to Pupupuhi Street**

**Daytime: 7 a.m. to 3:30 p.m., Monday to Saturday**

One alternating lane of westbound Farrington Highway will be closed.

**Daytime: 8:30 a.m. to 5:30 p.m., Monday to Saturday**

One alternating lane of eastbound Farrington Highway will be closed.

**Daytime: 8:30 a.m. to 3:30 p.m., Monday to Saturday**

The left-turn lane of eastbound and westbound Farrington Highway at Pupukahi Street will be closed. Eastbound drivers will be detoured to Pupupuhi Street. Westbound drivers will be detoured to Leokane Street.

**Nighttime: 7 p.m. to 5 a.m., Monday to Saturday**

Alternating lanes of eastbound and westbound Farrington Highway will be closed.

**LOCATION: Pupupuhi Street to Aniani Place**

**Daytime: 7 a.m. to 3:30 p.m., Monday to Saturday**

One alternating lane of westbound Farrington Highway will be closed.

**Daytime: 8:30 a.m. to 5:30 p.m., Monday to Saturday**

One alternating lane of eastbound Farrington Highway will be closed.

**Daytime: 8:30 a.m. to 3:30 p.m., Monday to Saturday**

The left-turn lane of eastbound and westbound Farrington Highway at Pupupuhi Street will be closed. Eastbound drivers will be detoured to Aniani Place. Westbound drivers will be detoured to Pupukahi Street.

**Nighttime: 7 p.m. to 5 a.m., Monday to Saturday**

Alternating lanes of eastbound and westbound Farrington Highway will be closed.

**LOCATION: Aniani Place to Waipahu Depot Street**

**Daytime: 7 a.m. to 3:30 p.m., Monday to Saturday**

One alternating lane of westbound Farrington Highway will be closed.

**Daytime: 8:30 a.m. to 5:30 p.m., Monday to Saturday**

One alternating lane of eastbound Farrington Highway will be closed.

**Nighttime: 7 p.m. to 5 a.m., Monday to Saturday**

Alternating lanes of eastbound and westbound Farrington Highway will be closed.

**LOCATION: Waipahu Depot Street to Mokuola Street**

**Daytime: 7 a.m. to 3:30 p.m., Monday to Saturday**

One alternating lane of westbound Farrington Highway will be closed.

**Daytime: 8:30 a.m. to 3:30 p.m., Monday to Saturday**

The left-turn lane of eastbound Farrington Highway at Waipahu Depot Street will be closed. Drivers will be detoured to Mokuola Street.

**Daytime: 8:30 a.m. to 5:30 p.m., Monday to Saturday**

One alternating lane of eastbound Farrington Highway will be closed.

**Nighttime: 7 p.m. to 5 a.m., Monday to Saturday**

Alternating lanes of eastbound and westbound Farrington Highway will be closed.

**LOCATION: Mokuola Street to Paiwa Street**

**Daytime: 7 a.m. to 3:30 p.m., Monday to Saturday**

One alternating lane of westbound Farrington Highway will be closed.

**Daytime: 8:30 a.m. to 5:30 p.m., Monday to Saturday**

One alternating lane of eastbound Farrington Highway will be closed.

**Daytime: 8:30 a.m. to 3:30 p.m., Monday to Saturday**

The left turn lane on eastbound and westbound Farrington Highway at Mokuola Street will be closed. Eastbound drivers will be detoured to Paiwa Street. Westbound drivers will be detoured to Waipahu Depot Road.

**Nighttime: 7 p.m. to 5 a.m., Monday to Saturday**

Alternating lanes of eastbound and westbound Farrington Highway will be closed.



**LOCATION: Paiwa Street to Kahualii Street**

**Daytime: 7 a.m. to 3:30 p.m., Monday to Saturday**

One inside lane of westbound Farrington Highway will be closed.

**Daytime: 8:30 a.m. to 5:30 p.m., Monday to Saturday**

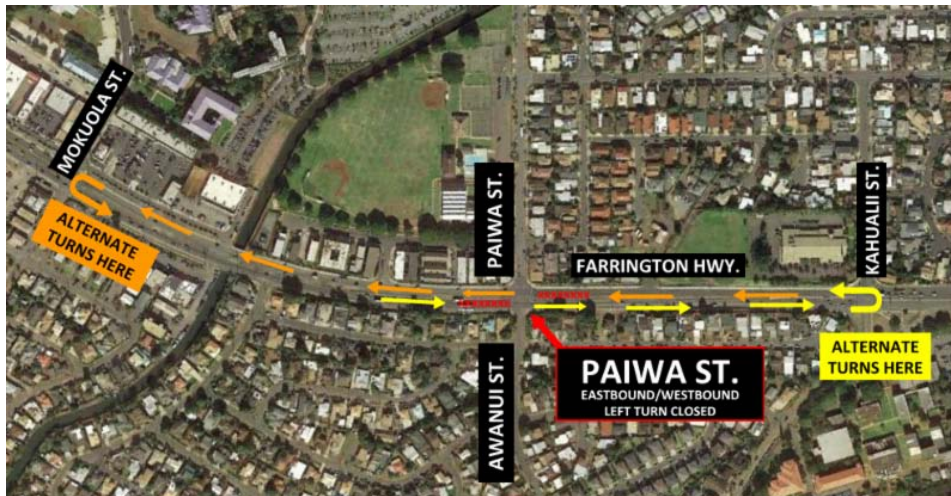
One inside lane of eastbound Farrington Highway will be closed.

**Daytime: 8:30 a.m. to 3:30 p.m., Monday to Saturday**

The left turn lane on eastbound and westbound Farrington Highway at Paiwa Street will be closed. Eastbound drivers will be detoured to Kahualii Street. Westbound drivers will be detoured to Mokuola Street.

**Nighttime: 7 p.m. to 5 a.m., Monday to Saturday**

Alternating lanes of eastbound and westbound Farrington Highway will be closed.



**LOCATION: Kahualii Street to the Kamehameha Highway overpass**

**Daytime: 7 a.m. to 3:30 p.m., Monday to Saturday**

One alternating lane of westbound Farrington Highway will be closed.

**Daytime: 8:30 a.m. to 3:30 p.m., Monday to Saturday**

The left-turn lane on eastbound Farrington Highway at Kahualii Street will be closed. Drivers will be detoured to an alternate left turn at Waiawa Road.

**Daytime: 8:30 a.m. to 5:30 p.m., Monday to Saturday**

One alternating lane of eastbound Farrington Highway will be closed.

**Nighttime: 7 p.m. to 5 a.m., Monday to Saturday**

Alternating lanes of eastbound and westbound Farrington Highway will be closed. The westbound left-turn at Kahualii Street will be closed; drivers will be detoured to Paiwa Street.