

## TRAFFIC UPDATE - Kamehameha Highway

### Week of March 5, 2017

*\*Please note all left-turn and intersection closures mentioned below will not conflict with closures at adjacent intersections.*

**Monday, March 6 to Saturday, March 11, 2017**

**LOCATION: Waiawa Road to Acacia Road**

**Daytime: 8:30 a.m. to 3:30 p.m., Monday to Saturday**

The inside left-turn lane of eastbound Kamehameha Highway will be closed.

**Nighttime: 5:30 p.m. to 5:30 a.m., Monday to Saturday**

One inside lane of eastbound Kamehameha Highway will be closed.

**Nighttime: 8 p.m. to 7 a.m., Monday to Saturday**

One inside lane of westbound Kamehameha Highway will be closed.

**LOCATION: Acacia Road to Waimano Home Road**

**Daytime: 7 a.m. to 3:30 p.m., Monday to Saturday**

The left-turn from westbound Kamehameha Highway onto Acacia Road will be closed. Motorists will be detoured at Waiawa Road.

**Daytime: 7 a.m. to 2:30 p.m., Monday to Saturday**

The inside lane of westbound Kamehameha Highway will be closed.

**Nighttime: 5:30 p.m. to 5:30 a.m., Monday to Saturday**

One inside lane of eastbound Kamehameha Highway will be closed.

**Nighttime: 8 p.m. to 7 a.m., Monday to Saturday**

The inside lane of Kamehameha Highway will be closed.

**LOCATION: Waimano Home Road to Puu Momi Street**

**24 Hours a Day, Seven Days a Week**

A single inside lane of eastbound Kamehameha Highway will be closed. Two eastbound lanes will remain open during peak travel times.

**Daytime: 7 a.m. to 2:30 p.m., Monday to Saturday**

One inside westbound lane of Kamehameha Highway will be closed.

**Nighttime: 5:30 p.m. to 5:30 a.m., Monday to Saturday**

One inside lane of eastbound Kamehameha Highway will be closed.

**Nighttime: 8 p.m. to 7 a.m., Monday to Saturday**

One inside lane of westbound Kamehameha Highway will be closed.

**Nighttime: 10 p.m. to 5 a.m., Monday**

The eastbound lanes of Kamehameha Highway will be closed. Motorists will be detoured to Puu Poni Street.

**LOCATION: Puu Momi Street to Puu Poni Street**

**24 Hours a Day, 7 Days a Week**

The inside lane on eastbound Kamehameha Highway will be closed. Two eastbound lanes will remain open during peak travel times.

**Daytime: 7 a.m. to 2:30 p.m., Monday to Saturday**

One inside westbound lane of Kamehameha Highway will be closed.

**Nighttime: 5:30 p.m. to 5:30 a.m., Monday to Saturday**

One inside lane of eastbound Kamehameha Highway will be closed.

**Nighttime: 8 p.m. to 7 a.m., Monday to Saturday**

One inside lane of westbound Kamehameha Highway will be closed.

**LOCATION: Puu Poni Street to Kuleana Road**

**24 Hours a Day, Seven Days a Week**

A single inside lane on eastbound Kamehameha Highway will be closed. Two eastbound lanes will remain open during peak travel times.

**Daytime: 7 a.m. to 2:30 p.m., Monday to Saturday**

Alternating lanes of westbound Kamehameha Highway will be closed.

**Daytime: 8:30 a.m. to 3:30 p.m., Monday to Saturday**

Alternating lanes of eastbound Kamehameha Highway will be closed.

**Nighttime: 5:30 p.m. to 5:30 a.m., Monday to Saturday**

One inside lane of eastbound Kamehameha Highway will be closed.

**Nighttime: 8 p.m. to 7 a.m., Monday to Saturday**

One inside lane of westbound Kamehameha Highway will be closed.

**LOCATION: Kuleana Road to Kaahumanu Street**

**24 Hours a Day, Seven Days a Week**

A single inside lane on eastbound Kamehameha Highway and a single lane on westbound Kamehameha Highway will be closed.

**Nighttime: 5:30 p.m. to 5:30 a.m., Monday to Saturday**

Alternating lanes of eastbound Kamehameha Highway will be closed.

**Nighttime: 8 p.m. to 7 a.m., Monday to Saturday**

Alternating lanes of westbound Kamehameha Highway will be closed.

**AIEA**

**Monday, March 6 to Saturday, March 11, 2017**

**LOCATION: Kaahumanu Street to Hekaha Street**

**24 Hours a Day, Seven Days a Week**

The inside lane on eastbound Kamehameha Highway and a single lane on westbound Kamehameha Highway will be closed.

**Nighttime: 5:30 p.m. to 5:30 a.m., Monday to Saturday**

Alternating lanes of eastbound Kamehameha Highway will be closed.

**Nighttime: 8 p.m. to 7 a.m., Monday to Saturday**

Alternating lanes of westbound Kamehameha Highway will be closed.

**LOCATION: Hekaha Street to Kanuku Street**

**24 Hours a Day, Seven days a Week**

The inside lane on eastbound Kamehameha Highway and a single inside lane on westbound Kamehameha Highway will be closed.

**Daytime: 8:30 a.m. to 3:30 p.m., Monday to Saturday**

One inside lane on eastbound Kamehameha Highway will be closed.

**Nighttime: 5:30 p.m. to 5:30 a.m., Monday to Saturday**

Alternating lanes of eastbound Kamehameha Highway will be closed.

**Nighttime: 8 p.m. to 7 a.m., Monday to Saturday**

Alternating lanes of westbound Kamehameha Highway will be closed.

**LOCATION: Kanuku Street to Kaonohi Street**

**24 Hours a Day, Seven Days a Week**

The inside lane on eastbound Kamehameha Highway and a single lane on westbound Kamehameha Highway will be closed.

**Daytime: 8:30 a.m. to 3:30 p.m., Friday**

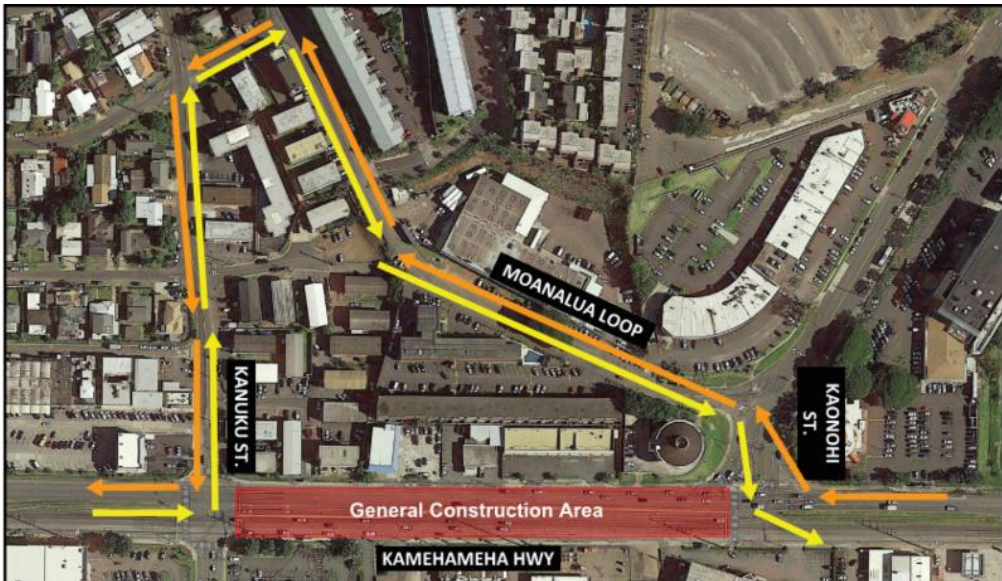
A single left-turn from eastbound Kamehameha Highway onto Kaonohi Street will be closed. Motorists will be detoured to Pali Momi Street.

**Nighttime: 5:30 p.m. to 5:30 a.m., Monday to Saturday**

Alternating lanes of eastbound Kamehameha Highway will be closed.

**Nighttime: 8 p.m. to 5:30 a.m., Monday to Saturday**

The westbound and eastbound lanes of Kamehameha Highway between Kanuku Street and Kaonohi Street will be closed. Westbound motorists will be detoured at Kaonohi Street. Eastbound motorists will be detoured at Kanuku Street.



**Nighttime: 8 p.m. to 5:30 a.m., Monday to Saturday**

No left-turns or crossing at the Kaonohi Street intersection. Eastbound motorists will be detoured to Pali Momi Street. Westbound motorists will be detoured to Kanuku Street.



**Nighttime: 8 p.m. to 7 a.m., Monday to Saturday**

Alternating lanes of westbound Kamehameha Highway will be closed.

**LOCATION: Kaonohi Street to Pali Momi Street**

**24 Hours a Day, Seven Days a Week**

The inside lane of eastbound Kamehameha Highway and the inside lane of westbound Kamehameha Highway will be closed.

**Daytime: 8:30 a.m. to 3:30 p.m., Monday to Saturday**

The inside lane of eastbound Kamehameha Highway will be closed.

The inside lane of northbound Pali Momi Street onto will be closed.

**Nighttime: 5:30 p.m. to 5:30 a.m., Monday to Saturday**

Alternating lanes of eastbound Kamehameha Highway will be closed.

**Nighttime: 8 p.m. to 5 a.m., Monday to Saturday**

No left-turns at the Pali Momi Street intersection. Eastbound motorists will be detoured to Honomanu Street.

**Nighttime: 8 p.m. to 7 a.m., Monday to Saturday**

Alternating lanes of westbound Kamehameha Highway will be closed.

**LOCATION: Pali Momi Street to Honomanu Street**

**24 hours a day, seven days a week**

A single lane of eastbound Kamehameha Highway and a single lane on westbound Kamehameha Highway will be closed.

**Daytime: 7 a.m. to 2:30 p.m., Monday to Saturday**

The inside left-turn lane of southbound Pali Momi Street onto eastbound Kamehameha Highway will be closed.

**Nighttime: 5:30 p.m. to 5:30 a.m., Monday to Saturday**

Alternating lanes of eastbound Kamehameha Highway will be closed.

**Nighttime: 8 p.m. to 7 a.m., Monday to Saturday**

Alternating lanes of westbound Kamehameha Highway will be closed.

**Nighttime: 10 p.m. to 5 a.m., Friday**

The eastbound lanes of Kamehameha Highway will be closed. Motorists will be detoured to at Pali Momi Street to Honomanu Street. The westbound lanes of Kamehameha Highway will be closed. Motorists will be detoured to a temporary lane of eastbound Kamehameha Highway.

**LOCATION: Honomanu Street to Salt Lake Boulevard**

**24 Hours a Day, Seven Days a Week**

The inside lane on eastbound Kamehameha Highway and a single inside lane on westbound Kamehameha Highway will be closed.

**Daytime: 7 a.m. to 3:30 p.m., Monday to Saturday**

The outside lane of westbound Kamehameha Highway will be closed.

**Nighttime: 5:30 p.m. to 5:30 a.m., Monday to Saturday**

Alternating lanes of eastbound Kamehameha Highway will be closed.

**Nighttime: 8 p.m. to 4 a.m., Monday to Saturday**

The westbound lanes of Kamehameha Highway will be closed. Motorists will be detoured to Moanalua Road.



**Nighttime: 8 p.m. to 5:30 a.m., Monday to Saturday**

The eastbound lanes of Kamehameha Highway will be closed. Motorists will be detoured to Moanalua Road.



**Nighttime: 8 p.m. to 5:30 a.m., Monday to Saturday**

The westbound left-turn from Kamehameha Highway onto McGrew Loop will be closed. Westbound motorists will be detoured to Pali Momi Street.

**Nighttime: 8 p.m. to 7 a.m., Monday to Saturday**

Alternating lanes of westbound Kamehameha Highway will be closed.

**LOCATION: Salt Lake Boulevard to Kohomua Street**

**Daytime: 7 a.m. to 3:30 p.m., Monday to Saturday**

The outside lane of westbound Kamehameha Highway will be closed.

**Nighttime: 5:30 p.m. to 5:30 a.m., Monday to Saturday**

The outside lane of eastbound Kamehameha Highway will be closed.

**Nighttime: 8 p.m. to 7 a.m., Monday to Saturday**

Up to two outside lanes of westbound Kamehameha Highway will be closed.