

TRAFFIC UPDATE - Kamehameha Highway

Week of March 12, 2017

**Please note all left-turn and intersection closures mentioned below will not conflict with closures at adjacent intersections.*

Monday, March 13 to Saturday, March 18, 2017

LOCATION: Waiawa Rd to Acacia Rd

Daytime: 8:30 a.m. to 3:30 p.m., Monday to Saturday

The inside left-turn lane of eastbound Kamehameha Highway will be closed.

Nighttime: 5:30 p.m. to 5:30 a.m., Monday to Saturday

One inside lane of eastbound Kamehameha Highway will be closed.

Nighttime: 8 p.m. to 7 a.m., Monday to Saturday

One inside lane of westbound Kamehameha Highway will be closed.

LOCATION: Acacia Rd to Waimano Home Rd

Daytime: 7 a.m. to 3:30 p.m., Monday to Saturday

The left-turn from westbound Kamehameha Highway onto Acacia Road will be closed. Motorists will be detoured at Waiawa Road.

Daytime: 7 a.m. to 2:30 p.m., Monday to Saturday

The inside lane on westbound Kamehameha Highway will be closed.

Nighttime: 5:30 p.m. to 5:30 a.m., Monday to Saturday

One inside lane of eastbound Kamehameha Highway will be closed.

Nighttime: 8 p.m. to 7 a.m., Monday to Saturday

One inside lane of westbound Kamehameha Highway will be closed.

LOCATION: Waimano Home Rd to Puu Momi St

24 Hours a Day, Seven Days a Week

A single inside lane on eastbound Kamehameha Highway will be closed. Two eastbound lanes will remain open during peak travel times.

Daytime: 7 a.m. to 2:30 p.m., Monday to Saturday

One inside westbound lane of Kamehameha Highway will be closed.

Nighttime: 5:30 p.m. to 5:30 a.m., Monday to Saturday

One inside lane of eastbound Kamehameha Highway will be closed.

Nighttime: 8 p.m. to 7 a.m., Monday to Saturday

One inside lane of westbound Kamehameha Highway will be closed.

Nighttime: 10 p.m. to 5 a.m., Monday

The eastbound lanes of Kamehameha Highway will be closed. Motorists will be detoured to Puu Poni Street.

LOCATION: Puu Momi St to Puu Poni St

24 Hours a Day, 7 Days a Week

A single inside lane on eastbound Kamehameha Highway will be closed. Two eastbound lanes will remain open during peak travel times.

Daytime: 7 a.m. to 2:30 p.m., Monday to Saturday

One inside westbound lane of Kamehameha Highway will be closed.

Nighttime: 5:30 p.m. to 5:30 a.m., Monday to Saturday

One inside lane of eastbound Kamehameha Highway will be closed.

Nighttime: 8 p.m. to 7 a.m., Monday to Saturday

One inside lane of westbound Kamehameha Highway will be closed.

LOCATION: Puu Poni St to Kuleana Rd

24 Hours a Day, Seven Days a Week

A single inside lane on eastbound Kamehameha Highway will be closed. Two eastbound lanes will remain open during peak travel times.

Daytime: 7 a.m. to 2:30 p.m., Monday to Saturday

Alternating lanes of westbound Kamehameha Highway will be closed.

Daytime: 8:30 a.m. to 3:30 p.m., Monday to Saturday

Alternating lanes of eastbound Kamehameha Highway will be closed. Eastbound left-turn from Kamehameha Highway onto Kuleana Road will be closed intermittently. Motorists will be detoured to Kaahumanu Street.

Nighttime: 5:30 p.m. to 5:30 a.m., Monday to Saturday

One inside lane of eastbound Kamehameha Highway will be closed.

Nighttime: 8 p.m. to 7 a.m., Monday to Saturday

One inside lane of westbound Kamehameha Highway will be closed.

LOCATION: Kuleana Rd to Kaahumanu St

24 Hours a Day, Seven Days a Week

A single inside lane on eastbound Kamehameha Highway and a single lane on westbound Kamehameha Highway will be closed.

Nighttime: 5:30 p.m. to 5:30 a.m., Monday to Saturday

Alternating lanes of eastbound Kamehameha Highway will be closed.

Nighttime: 8 p.m. to 7 a.m., Monday to Saturday

Alternating lanes of westbound Kamehameha Highway will be closed.

AIEA

Monday, March 13 to Saturday, March 18, 2017

LOCATION: Kaahumanu St to Hekaha St

24 Hours a Day, Seven Days a Week

The inside lane on eastbound Kamehameha Highway and the inside lane on westbound Kamehameha Highway will be closed.

Nighttime: 5:30 p.m. to 5:30 a.m., Monday to Saturday

Alternating lanes of eastbound Kamehameha Highway will be closed.

Nighttime: 8 p.m. to 7 a.m., Monday to Saturday

Alternating lanes of westbound Kamehameha Highway will be closed.

Nighttime: 8 p.m. to 5:30 a.m., Monday to Saturday

The eastbound lanes of Kamehameha Highway will be closed. Traffic will be detoured to a temporary lane on westbound Kamehameha Highway.

LOCATION: Hekaha St to Kanuku St

24 Hours a Day, Seven Days a Week

The inside lane on eastbound Kamehameha Highway and the inside lane on westbound Kamehameha Highway will be closed.

Daytime: 8:30 a.m. to 3:30 p.m., Monday to Saturday

One inside lane on eastbound Kamehameha Highway and will be closed. The eastbound left-turn onto Kanuku Street will be closed intermittently.

Nighttime: 5:30 p.m. to 5:30 a.m., Monday to Saturday

Alternating lanes of eastbound Kamehameha Highway will be closed.

Nighttime: 8 p.m. to 7 a.m., Monday to Saturday

Alternating lanes of westbound Kamehameha Highway will be closed.

LOCATION: Lipoa Place to Kanuku Street

Daytime: 6 a.m. to 2:30 p.m., Wednesday to Friday

The right westbound lane of Kamehameha Highway may be closed.

Daytime: 6 a.m. to 2:30 p.m., Wednesday to Friday

The inside right turn lane from Kaonohi Street to Kamehameha Highway westbound may be closed.

LOCATION: Kanuku St to Kaonohi St

24 Hours a Day, Seven Days a Week

The inside lane on eastbound Kamehameha Highway and the inside lane on westbound Kamehameha Highway will be closed.

Daytime: 8:30 a.m. to 3:30 p.m., Monday to Saturday

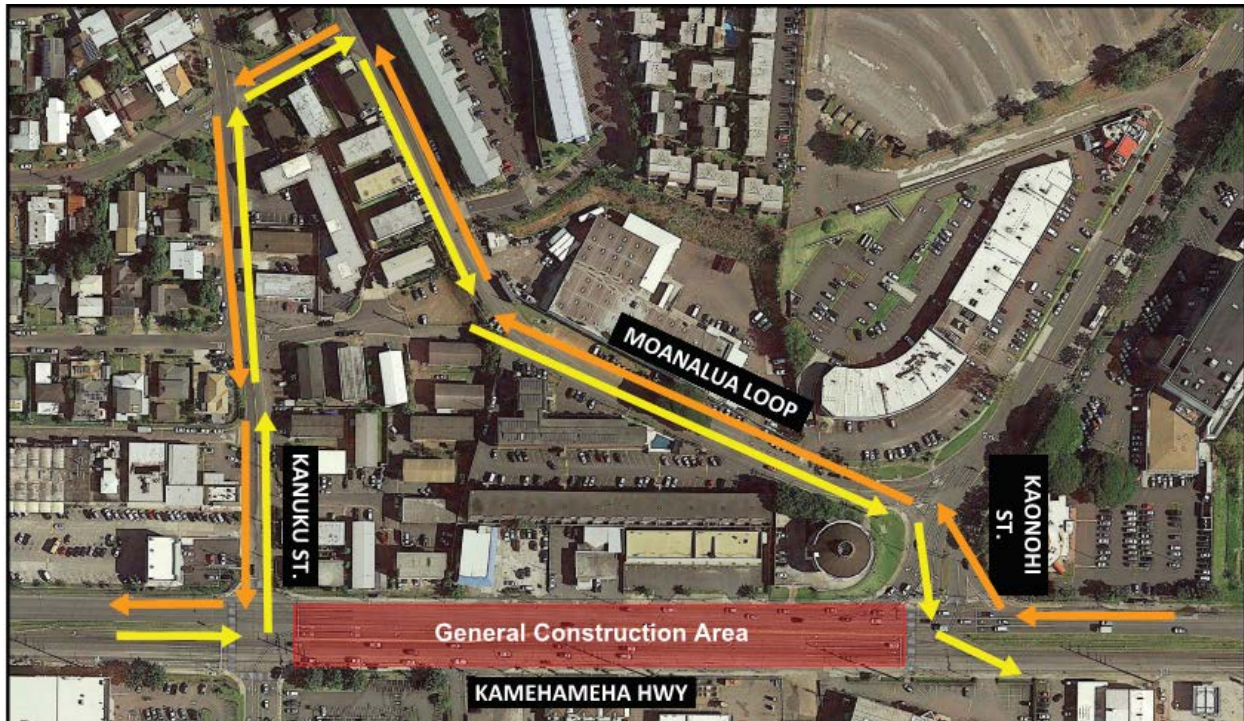
One left-turn lane from eastbound Kamehameha Highway onto Kaonohi Street will be closed. Motorists will be detoured to Pali Momi Street.

Nighttime: 5:30 p.m. to 5:30 a.m., Monday

Alternating lanes of eastbound Kamehameha Highway will be closed.

Nighttime: 8 p.m. to 5:30 a.m., Monday to Saturday

The westbound and eastbound lanes of Kamehameha Highway between Kanuku Street and Kaonohi Street will be closed. Westbound motorists will be detoured at Kaonohi Street. Eastbound motorists will be detoured at Kanuku Street.



Nighttime: 8 p.m. to 5:30 a.m., Monday to Saturday

No left-turns or crossing at the Kaonohi Street intersection. Eastbound motorists will be detoured to Pali Momi Street. Westbound motorists will be detoured to Kanuku Street.



Nighttime: 8 p.m. to 7 a.m., Monday to Saturday

Alternating lanes of westbound Kamehameha Highway will be closed.

LOCATION: Kaonohi St to Pali Momi St

24 Hours a Day, Seven Days a Week

The inside lane on eastbound Kamehameha Highway and the inside lane on westbound Kamehameha Highway will be closed.

Daytime: 7 a.m. to 2:30 p.m., Monday to Saturday

The westbound left-turn from Kamehameha Highway onto Lipoa Place will be closed intermittently. Motorists will be detoured to Kanuku Street.

Daytime: 8:30 a.m. to 3:30 p.m., Monday to Saturday

The inside lane of eastbound Kamehameha Highway will be closed.

Daytime: 8:30 a.m. to 3:30 p.m., Monday to Saturday

The inside lane of northbound Pali Momi Street onto will be closed.

Nighttime: 5:30 p.m. to 5:30 a.m., Monday to Saturday

Alternating lanes of eastbound Kamehameha Highway will be closed.

Nighttime: 8 p.m. to 5 a.m., Monday to Saturday

No left-turns at the Pali Momi Street intersection. Eastbound motorists will be detoured to Honomanu Street.

Nighttime: 8 p.m. to 7 a.m., Monday to Saturday

Alternating lanes of westbound Kamehameha Highway will be closed.

LOCATION: Pali Momi St to Honomanu St

24 hours a day, seven days a week

A single lane of eastbound Kamehameha Highway and a single lane on westbound Kamehameha Highway will be closed. No left-turns at the Aiea Kai intersection. Eastbound motorists will be detoured to Honomanu Street. Westbound motorists will be detoured to Lipoa Place.

Daytime: 7 a.m. to 2:30 p.m., Monday to Saturday

The inside left-turn lane of southbound Pali Momi Street onto eastbound Kamehameha Highway will be closed. The inside lane of northbound Pali Momi street will be closed.

Nighttime: 5:30 p.m. to 5:30 a.m., Monday to Saturday

Alternating lanes of eastbound Kamehameha Highway will be closed.

Nighttime: 8 p.m. to 7 a.m., Monday to Saturday

Alternating lanes of westbound Kamehameha Highway will be closed.

Nighttime: 10 p.m. to 5 a.m., Monday to Saturday

The eastbound lanes of Kamehameha Highway will be closed. Motorists will be detoured to at Pali Momi Street to Honomanu Street.

Nighttime: 10 p.m. to 5 a.m., Monday to Saturday

The westbound lanes of Kamehameha Highway will be closed. Motorists will be detoured to a temporary lane on eastbound Kamehameha Highway.

LOCATION: Honomanu Street to Salt Lake Boulevard

24 hours a day, seven days a week

The inside lane on eastbound Kamehameha Highway and the inside lane on westbound Kamehameha Highway will be closed.

Daytime: 7 a.m. to 3:30 p.m., Monday to Saturday

One outside lane on westbound Kamehameha Highway will be closed.

Nighttime: 5:30 p.m. to 5:30 a.m., Monday to Saturday

Alternating lanes of eastbound Kamehameha Highway will be closed.

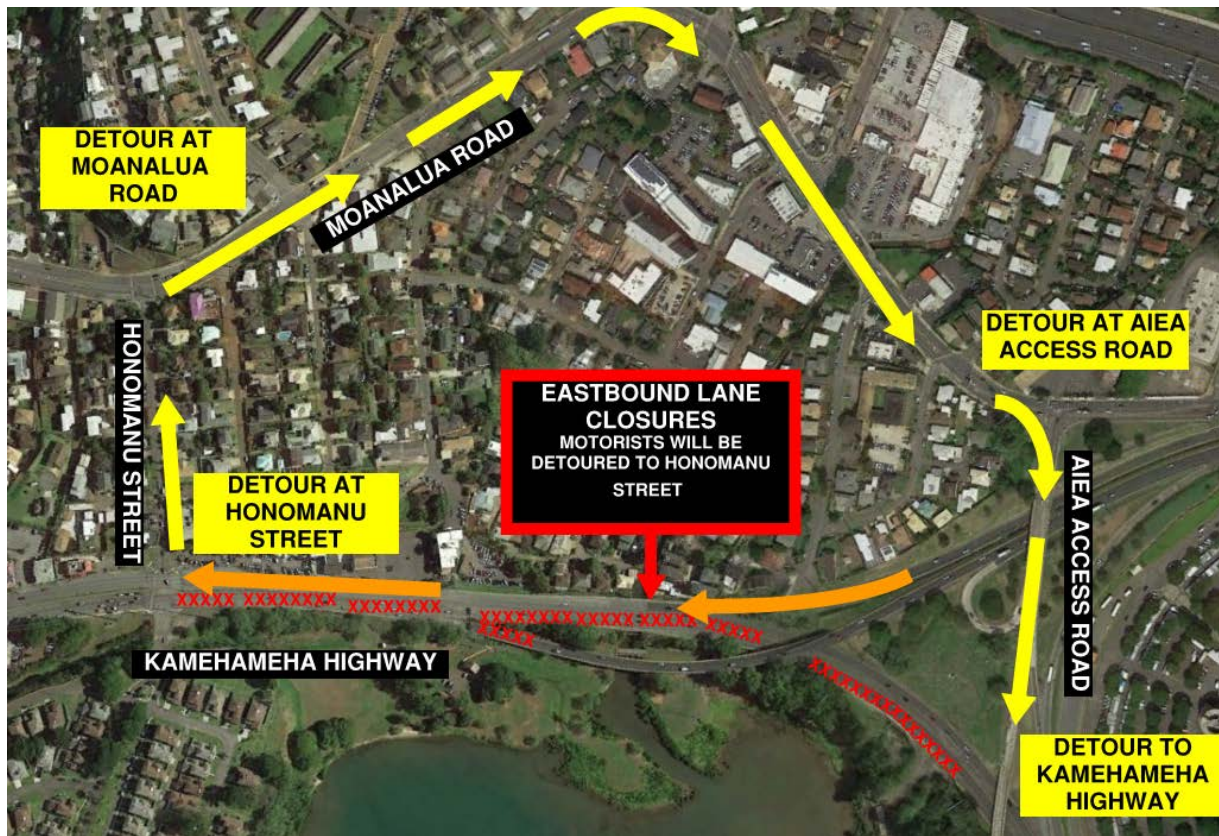
Nighttime: 8 p.m. to 4 a.m., Monday to Saturday

The westbound lanes of Kamehameha Highway will be closed. Motorists will be detoured to Moanalua Road.



Nighttime: 8 p.m. to 5:30 a.m., Monday to Saturday

The eastbound lanes of Kamehameha Highway will be closed. Motorists will be detoured to Moanalua Road.



Nighttime: 8 p.m. to 5:30 a.m., Monday to Saturday

The westbound left-turn from Kamehameha Highway onto McGrew Loop will be closed. Westbound motorists will be detoured to Pali Momi Street.

Nighttime: 8 p.m. to 7 a.m., Monday to Saturday

Alternating lanes of westbound Kamehameha Highway will be closed.

LOCATION: Salt Lake Boulevard to Kalaloa Street

Daytime: 7 a.m. to 3:30 p.m., Monday to Saturday

The outside lane of westbound Kamehameha Highway will be closed.

Nighttime: 5:30 p.m. to 5:30 a.m., Monday to Saturday

The outside lane of eastbound Kamehameha Highway will be closed.

Nighttime: 8 p.m. to 7 a.m., Monday to Saturday

Up to two outside lanes of westbound Kamehameha Highway will be closed.

Noise Impact: During potholing, vac truck, drilling and excavation work, expect increased noise levels from the unloading of materials and general machinery sounds.

Shoulder and median work signage/cones along the side of the road will mark the work area. Motorists are advised to drive with caution and provide a safe distance between their vehicles, the construction workers and equipment.