

TRAFFIC UPDATE - Kamehameha Highway

Week of April 30, 2017

**Please note all left-turn and intersection closures mentioned below will not conflict with closures at adjacent intersections.*

PEARL CITY

Monday, May 1 to Saturday, May 6, 2017

LOCATION: Waiawa Rd to Acacia Rd

Daytime: 8:30 a.m. to 3:30 p.m., Monday to Saturday

The inside left-turn lane of eastbound Kamehameha Highway and the inside westbound lane of Kamehameha Highway will be closed.

Nighttime: 5:30 p.m. to 5:30 a.m., Monday to Saturday

One inside lane of eastbound Kamehameha Highway will be closed.

Nighttime: 8 p.m. to 7 a.m., Monday to Saturday

One inside lane of westbound Kamehameha Highway will be closed.

LOCATION: Acacia Rd to Waimano Home Rd

Daytime: 7 a.m. to 3:30 p.m., Monday to Saturday

The left-turn from westbound Kamehameha Highway onto Acacia Road will be closed. Motorists will be detoured at Waiawa Road.

Daytime: 7 a.m. to 2:30 p.m., Monday to Saturday

The inside lane on westbound Kamehameha Highway will be closed.

Nighttime: 5:30 p.m. to 5:30 a.m., Monday to Saturday

One inside lane of eastbound Kamehameha Highway will be closed.

Nighttime: 8 p.m. to 7 a.m., Monday to Saturday

One inside lane of westbound Kamehameha Highway will be closed.

Nighttime: 10 p.m. to 5:30 a.m., Monday to Saturday

No crossing and no left-turns at the Waimano Home Road intersection. Southbound motorists will be detoured to Acacia Road. Westbound motorists will be detoured Acacia Road. Northbound motorists will be detoured to Puu Momi Street.

Nighttime: 10 p.m. to 5:30 a.m., Friday

The westbound lanes of Kamehameha Highway at Waimano Home Road will be closed. Westbound motorists will be detoured to Acacia Road. Southbound motorists will be detoured to Acacia Road.

LOCATION: Waimano Home Rd to Puu Momi St

24 Hours a Day, Seven Days a Week

A single inside lane on eastbound Kamehameha Highway will be closed. Two eastbound lanes will remain open during peak travel times.

Daytime: 7 a.m. to 2:30 p.m., Monday to Saturday

One inside westbound lane of Kamehameha Highway will be closed.

Nighttime: 5:30 p.m. to 5:30 a.m., Monday to Saturday

One inside lane of eastbound Kamehameha Highway will be closed.

Nighttime: 8 p.m. to 7 a.m., Monday to Saturday

One inside lane of westbound Kamehameha Highway will be closed.

LOCATION: Puu Momi St to Puu Poni St

24 Hours a Day, 7 Days a Week

A single inside lane on eastbound Kamehameha Highway will be closed. Two eastbound lanes will remain open during peak travel times.

Daytime: 7 a.m. to 2:30 p.m., Monday to Saturday

One inside westbound lane of Kamehameha Highway will be closed.

Daytime: 8:30 a.m. to 3:30 p.m., Monday to Saturday

The eastbound left-turn from Kamehameha Highway onto Puu Poni Street will be closed. Motorists will be detoured to Puu Momi Street.

Nighttime: 5:30 p.m. to 5:30 a.m., Monday to Saturday

One inside lane of eastbound Kamehameha Highway will be closed.

Nighttime: 8 p.m. to 7 a.m., Monday to Saturday

One inside lane of westbound Kamehameha Highway will be closed.

LOCATION: Puu Poni St to Kuleana Rd

24 Hours a Day, Seven Days a Week

A single inside lane on eastbound Kamehameha Highway will be closed. Two eastbound lanes will remain open during peak travel times.

Daytime: 7 a.m. to 2:30 p.m., Monday to Saturday

The inside lane of westbound Kamehameha Highway will be closed.

Nighttime: 5:30 p.m. to 5:30 a.m., Monday to Saturday

One inside lane of eastbound Kamehameha Highway will be closed.

Nighttime: 8 p.m. to 7 a.m., Monday to Saturday

One inside lane of westbound Kamehameha Highway will be closed.

LOCATION: Kuleana Rd to Kaahumanu St

24 Hours a Day, Seven Days a Week

A single inside lane on eastbound Kamehameha Highway and a single lane on westbound Kamehameha Highway will be closed.

Daytime: 7 a.m. to 2 p.m., Monday to Saturday

Alternating lanes of westbound Kamehameha Highway will be closed.

Nighttime: 5:30 p.m. to 5:30 a.m., Monday to Saturday

Alternating lanes of eastbound Kamehameha Highway will be closed.

Nighttime: 8 p.m. to 7 a.m., Monday to Saturday

Alternating lanes of westbound Kamehameha Highway will be closed.

Nighttime: 10 p.m. to 5:30 a.m., Monday to Saturday

The westbound lanes of Kamehameha Highway will be closed. Motorists will be detoured to a temporary lane on eastbound Kamehameha Highway.

AIEA

Monday, May 1 to Saturday, May 6, 2017

LOCATION: Kaahumanu St to Hekaha St

24 Hours a Day, Seven Days a Week

The inside lane on eastbound Kamehameha Highway and the inside lane on westbound Kamehameha Highway will be closed.

Daytime: 7 a.m. to 2 p.m., Monday to Saturday

Alternating lanes of westbound Kamehameha Highway will be closed.

Nighttime: 5:30 p.m. to 5:30 a.m., Monday to Saturday

Alternating lanes of eastbound Kamehameha Highway will be closed.

Nighttime: 8 p.m. to 7 a.m., Monday to Saturday

Alternating lanes of westbound Kamehameha Highway will be closed.

LOCATION: Hekaha St to Kanuku St

24 Hours a Day, Seven Days a Week

One lane on eastbound Kamehameha Highway and one lane on westbound Kamehameha Highway will be closed.

Daytime: 7 a.m. to 2 p.m., Monday to Saturday

Alternating lanes of westbound Kamehameha Highway will be closed.

Daytime: 8:30 a.m. to 3:30 p.m., Monday to Saturday

The southbound right-turn lane at Kanuku Street will be closed. Right-turns will be permitted from the through lane.

Nighttime: 5:30 p.m. to 5:30 a.m., Monday to Saturday

Alternating lanes of eastbound Kamehameha Highway will be closed.

Nighttime: 8 p.m. to 7 a.m., Monday to Saturday

Alternating lanes of westbound Kamehameha Highway will be closed.

LOCATION: Kanuku St to Kaonohi St

24 Hours a Day, Seven Days a Week

The inside lane on eastbound Kamehameha Highway and the inside lane on westbound Kamehameha Highway will be closed.

Daytime: 7 a.m. to 2 p.m., Monday to Saturday

Alternating lanes of westbound Kamehameha Highway will be closed.

Nighttime: 5:30 p.m. to 5:30 a.m., Monday

Alternating lanes of eastbound Kamehameha Highway will be closed.

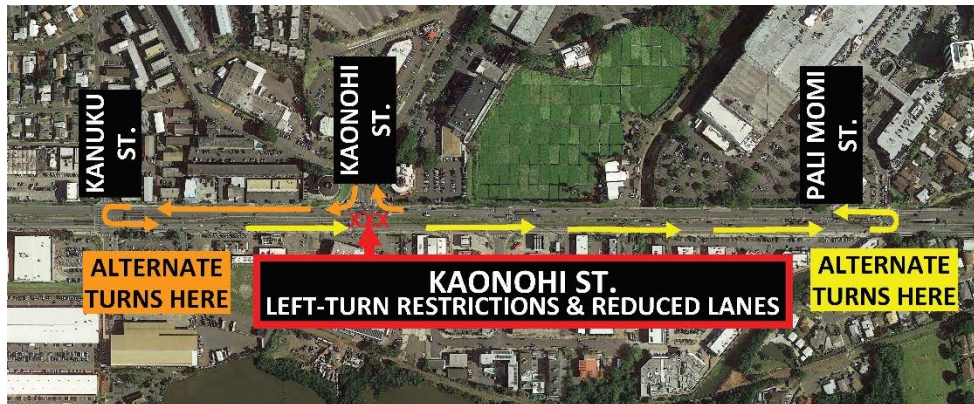
Nighttime: 8 p.m. to 5:30 a.m., Monday to Saturday

The westbound and eastbound lanes of Kamehameha Highway between Kanuku Street and Kaonohi Street will be closed. Westbound motorists will be detoured at Kaonohi Street. Eastbound motorists will be detoured at Kanuku Street.



Nighttime: 8 p.m. to 5:30 a.m., Monday to Saturday

No left-turns or crossing at the Kaonohi Street intersection. Eastbound motorists will be detoured to Pali Momi Street. Westbound motorists will be detoured to Kanuku Street.



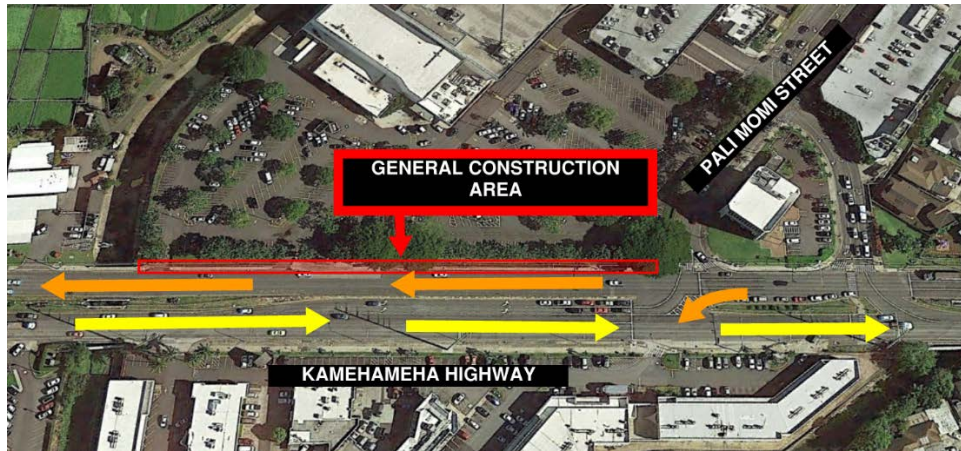
Nighttime: 8 p.m. to 7 a.m., Monday to Saturday

Alternating lanes of westbound Kamehameha Highway will be closed.

LOCATION: Kaonohi St to Pali Momi St

24 Hours a Day, Seven Days a Week

A single lane on eastbound Kamehameha Highway and a single lane on westbound Kamehameha Highway will be closed.



Daytime: 7 a.m. to 2 p.m., Monday to Saturday

Alternating lanes of westbound Kamehameha Highway will be closed.

Daytime: 8:30 a.m. to 3:30 p.m., Monday to Saturday

The outside lane of eastbound Kamehameha Highway will be closed.

Nighttime: 5:30 p.m. to 5:30 a.m., Monday to Saturday

Alternating lanes of eastbound Kamehameha Highway will be closed.

Nighttime: 8 p.m. to 5 a.m., Monday to Saturday

No left-turns at the Pali Momi Street intersection. Eastbound motorists will be detoured to Honomanu Street.

Nighttime: 8 p.m. to 7 a.m., Monday to Saturday

Alternating lanes of westbound Kamehameha Highway will be closed.

Nighttime: 10 p.m. to 5 a.m., Monday to Saturday

The westbound lanes of Kamehameha Highway will be closed. Motorists will be detoured to a temporary lane on eastbound Kamehameha Highway.

Nighttime: 10 p.m. to 5:30 a.m., Monday to Saturday

The eastbound lanes of Kamehameha Highway will be closed. Motorists will be detoured to a temporary lane on westbound Kamehameha Highway.

LOCATION: Pali Momi St to Honomanu St

24 hours a day, seven days a week

A single lane of eastbound Kamehameha Highway and a single lane on westbound Kamehameha Highway will be closed. The inside southbound left-turn lane of Pali Momi Street onto eastbound Kamehameha Highway will be closed. No left-turns at the Aiea Kai intersection. Eastbound motorists will be detoured to Honomanu Street. Westbound motorists will be detoured to Lipoa Place.

Daytime: 7 a.m. to 2 p.m., Monday to Saturday

Alternating lanes of westbound Kamehameha Highway will be closed.

Daytime: 7 a.m. to 2:30 p.m., Monday to Saturday

The outside left-turn lane of southbound Pali Momi Street onto eastbound Kamehameha Highway will be closed.

Daytime: 8:30 a.m., to 3:30 p.m., Monday to Saturday

The westbound left-turn at Pali Momi Street will be closed. Motorists will be detoured to an alternate left-turn.



Nighttime: 5:30 p.m. to 5:30 a.m., Monday to Saturday

Alternating lanes of eastbound Kamehameha Highway will be closed.

Nighttime: 8 p.m. to 7 a.m., Monday to Saturday

Alternating lanes of westbound Kamehameha Highway will be closed.

Nighttime: 10 p.m. to 5 a.m., Monday to Saturday

The eastbound lanes of Kamehameha Highway will be closed. Motorists will be detoured to at Pali Momi Street to Honomanu Street.

Nighttime: 10 p.m. to 5 a.m., Monday to Saturday

The westbound lanes of Kamehameha Highway will be closed. Motorists will be detoured to a temporary lane on eastbound Kamehameha Highway.

Nighttime: 10 p.m. to 5 a.m., Monday to Saturday

The eastbound lanes of Kamehameha Highway will be closed. Motorists will be detoured to a temporary lane on westbound Kamehameha Highway.

LOCATION: Honomanu Street to Salt Lake Boulevard

24 hours a day, seven days a week

A single lane on eastbound Kamehameha Highway and a single lane on westbound Kamehameha Highway will be closed.



Daytime: 7 a.m. to 3:30 p.m., Monday to Saturday

Alternating lanes of westbound Kamehameha Highway will be closed.

Nighttime: 5:30 p.m. to 5:30 a.m., Monday to Saturday

Alternating lanes of eastbound Kamehameha Highway will be closed.

Nighttime: 8 p.m. to 5:30 a.m., Monday to Saturday

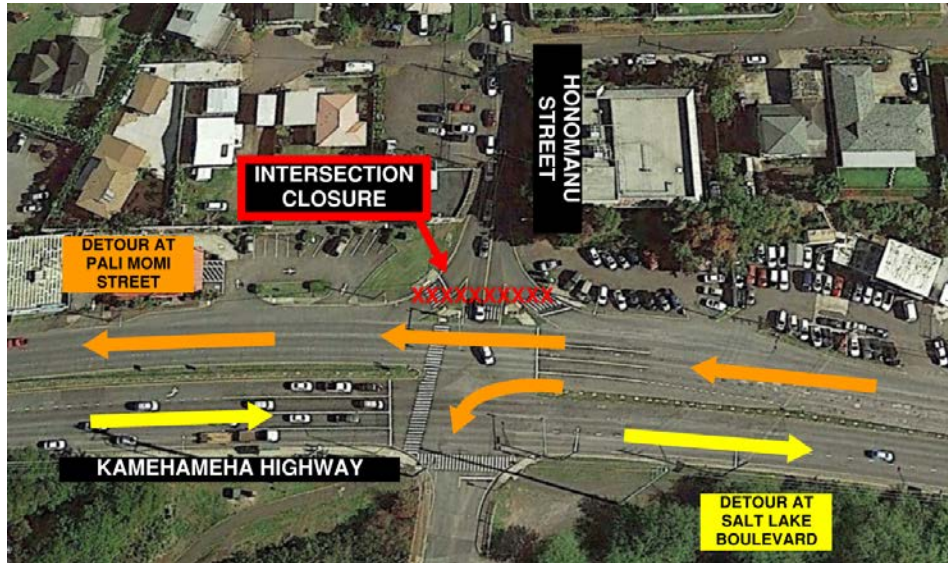
The westbound left-turn from Kamehameha Highway onto McGrew Loop will be closed. Westbound motorists will be detoured to Pali Momi Street.

Nighttime: 8 p.m. to 7 a.m., Monday to Saturday

Alternating lanes of westbound Kamehameha Highway will be closed.

Nighttime: 9 p.m. to 5:30 a.m., Monday to Saturday

No through traffic at the Honomanu Street intersection. The eastbound left-turn from Kamehameha Highway to Honomanu Street will be closed. Eastbound motorists will be detoured to Salt Lake Boulevard. Westbound motorists will be detoured to Pali Momi Street.

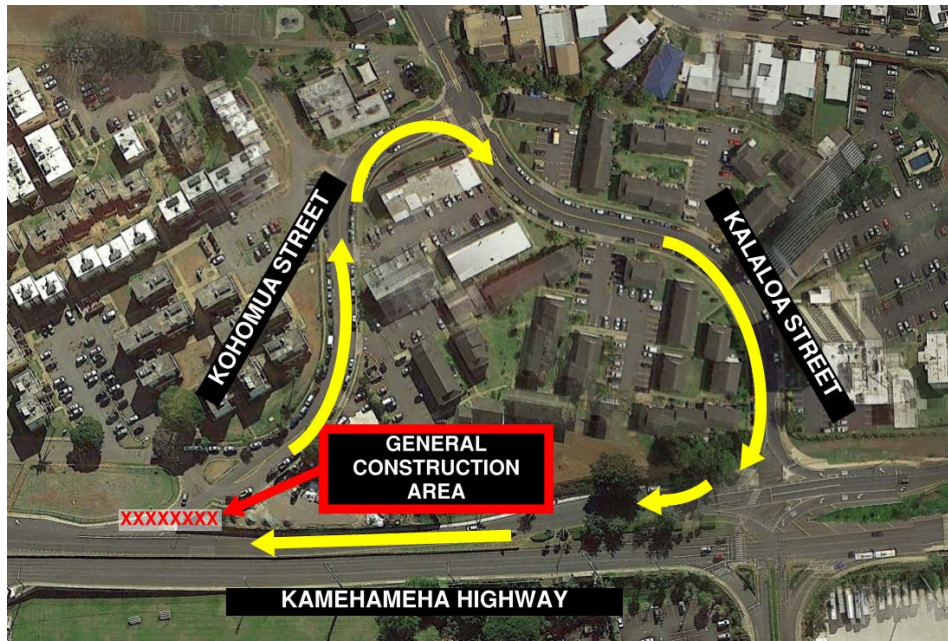


Daytime: 7 a.m. to 3:30 p.m., Monday to Saturday

Right-turn from Kohomua Street onto westbound Kamehameha Highway will be closed. Motorists will be detoured to Kalaloa Street.

Nighttime: 8 p.m. to 5:30 a.m., Monday to Saturday

Right-turn from Kohomua Street onto westbound Kamehameha Highway will be closed. Motorists will be detoured to Kalaloa Street.

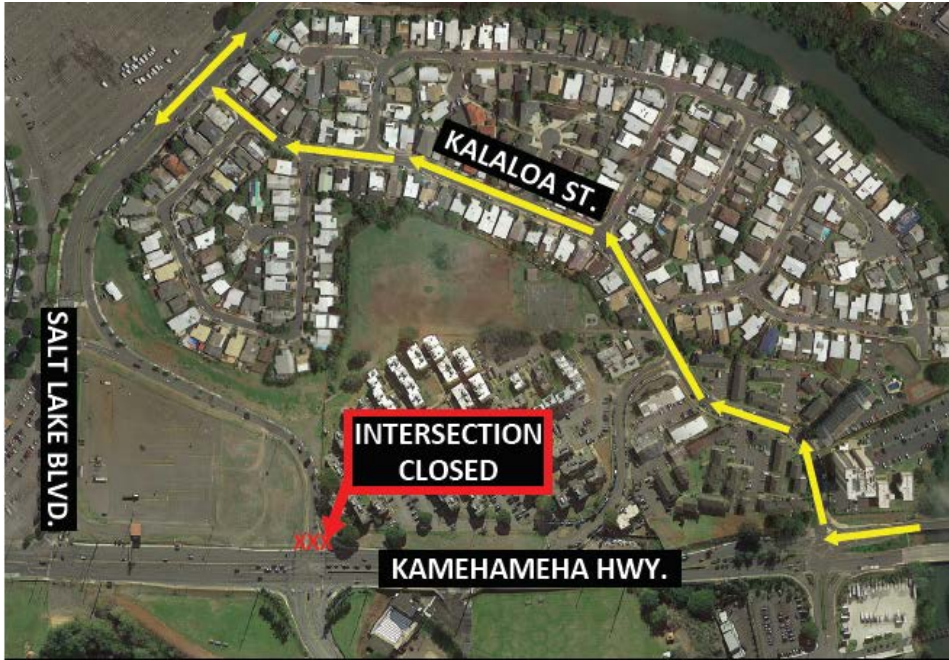


Daytime: 7 a.m. to 3:30 p.m., Monday to Saturday

Up to two lanes of westbound Kamehameha Highway will be closed.

Nighttime: 8 p.m. to 5 a.m., Monday to Thursday

No left-turns from eastbound Kamehameha Highway and no crossing Kamehameha Highway at the Salt Lake Boulevard in-bound intersection. Traffic will be detoured to Kalaloa Street via Arizona Street. Bus stops may be impacted. Please contact 848-5555 or visit www.thebus.org for updated bus stop and schedule information.



Nighttime: 8 p.m. to 5:30 a.m., Monday to Saturday

The outside lane of westbound Kamehameha Highway will be closed.

Nighttime: 8 p.m. to 7 a.m., Monday to Saturday

Up to two lanes of westbound Kamehameha Highway will be closed.

Noise Impact: During potholing, vac truck, drilling and excavation work, expect increased noise levels from the unloading of materials and general machinery sounds.

Shoulder and median work signage/cones along the side of the road will mark the work area. Motorists are advised to drive with caution and provide a safe distance between their vehicles, the construction workers and equipment.