

TRAFFIC UPDATE - Kamehameha Highway

Week of May 21, 2017

**Please note all left-turn and intersection closures mentioned below will not conflict with closures at adjacent intersections.*

PEARL CITY

Monday, May 22 to Saturday, May 27, 2017

LOCATION: Waiawa Rd to Acacia Rd

Daytime: 8:30 a.m. to 3:30 p.m., Monday to Saturday

The inside left-turn lane of eastbound Kamehameha Highway and the inside westbound lane of Kamehameha Highway will be closed.

Nighttime: 5:30 p.m. to 5:30 a.m., Monday to Saturday

One inside lane of eastbound Kamehameha Highway will be closed.

Nighttime: 8 p.m. to 7 a.m., Monday to Saturday

One inside lane of westbound Kamehameha Highway will be closed.

LOCATION: Acacia Rd to Waimano Home Rd

Daytime: 7 a.m. to 3:30 p.m., Monday to Saturday

The left-turn from westbound Kamehameha Highway onto Acacia Road will be closed. Motorists will be detoured at Waiawa Road.

Daytime: 7 a.m. to 2:30 p.m., Monday to Saturday

The inside lane on westbound Kamehameha Highway will be closed.

Nighttime: 5:30 p.m. to 5:30 a.m., Monday to Saturday

One inside lane of eastbound Kamehameha Highway will be closed.

Nighttime: 8 p.m. to 7 a.m., Monday to Saturday

One inside lane of westbound Kamehameha Highway will be closed.

Nighttime: 8 p.m. to 5:30 a.m., Monday to Saturday

The eastbound left turn from Kamehameha Highway onto Waimano Home Road will be closed. Motorists will be detoured to Puu Momi Street.

LOCATION: Waimano Home Rd to Puu Momi St

24 Hours a Day, Seven Days a Week

A single inside lane on eastbound Kamehameha Highway will be closed. Two eastbound lanes will remain open during peak travel times.

Daytime: 7 a.m. to 2:30 p.m., Monday to Saturday

One inside westbound lane of Kamehameha Highway will be closed.

Nighttime: 5:30 p.m. to 5:30 a.m., Monday to Saturday

One inside lane of eastbound Kamehameha Highway will be closed.

Nighttime: 8 p.m. to 7 a.m., Monday to Saturday

One inside lane of westbound Kamehameha Highway will be closed.

LOCATION: Puu Momi St to Puu Poni St

24 Hours a Day, 7 Days a Week

A single inside lane on eastbound Kamehameha Highway will be closed. Two eastbound lanes will remain open during peak travel times.

Daytime: 7 a.m. to 2:30 p.m., Monday to Saturday

One inside westbound lane of Kamehameha Highway will be closed.

Daytime: 8:30 a.m. to 3:30 p.m., Monday to Saturday

The eastbound left-turn from Kamehameha Highway onto Puu Poni Street will be closed. Motorists will be detoured to Puu Momi Street or Kuleana Road.

Nighttime: 5:30 p.m. to 5:30 a.m., Monday to Saturday

Alternating lanes of eastbound Kamehameha Highway will be closed.

Nighttime: 8 p.m. to 7 a.m., Monday to Saturday

Alternating lanes of eastbound Kamehameha Highway will be closed.

LOCATION: Puu Poni St to Kuleana Rd

24 Hours a Day, Seven Days a Week

A single inside lane on eastbound Kamehameha Highway will be closed. Two eastbound lanes will remain open during peak travel times.

Daytime: 7 a.m. to 2:30 p.m., Monday to Saturday

The inside lane of westbound Kamehameha Highway will be closed.

Nighttime: 5:30 p.m. to 5:30 a.m., Monday to Saturday

One inside lane of eastbound Kamehameha Highway will be closed.

Nighttime: 8 p.m. to 7 a.m., Monday to Saturday

One inside lane of westbound Kamehameha Highway will be closed.

LOCATION: Kuleana Rd to Kaahumanu St

24 Hours a Day, Seven Days a Week

A single inside lane on eastbound Kamehameha Highway and a single lane on westbound Kamehameha Highway will be closed.

Daytime: 7 a.m. to 2 p.m., Monday to Saturday

Alternating lanes of westbound Kamehameha Highway will be closed.

Nighttime: 5:30 p.m. to 5:30 a.m., Monday to Saturday

Alternating lanes of eastbound Kamehameha Highway will be closed.

Nighttime: 8 p.m. to 7 a.m., Monday to Saturday

Alternating lanes of westbound Kamehameha Highway will be closed.

Nighttime: 8 p.m. to 5:30 a.m., Monday to Saturday

The eastbound left turn from Kamehameha Highway onto Kaahumanu Street will be closed. Motorists will be detoured to Puu Momi Street.

AIEA

Monday, May 22 to Saturday, May 27, 2017

LOCATION: Kaahumanu St to Hekaha St

24 Hours a Day, Seven Days a Week

The inside lane on eastbound Kamehameha Highway and the inside lane on westbound Kamehameha Highway will be closed.

Daytime: 7 a.m. to 2 p.m., Monday to Saturday

Alternating lanes of westbound Kamehameha Highway will be closed.

Nighttime: 5:30 p.m. to 5:30 a.m., Monday to Saturday

Alternating lanes of eastbound Kamehameha Highway will be closed.

Nighttime: 8 p.m. to 7 a.m., Monday to Saturday

Alternating lanes of westbound Kamehameha Highway will be closed.

LOCATION: Hekaha St to Kanuku St

24 Hours a Day, Seven Days a Week

One lane on eastbound Kamehameha Highway and one lane on westbound Kamehameha Highway will be closed.

Daytime: 7 a.m. to 2 p.m., Monday to Saturday

Alternating lanes of westbound Kamehameha Highway will be closed.

Daytime: 8:30 a.m. to 3:30 p.m., Monday to Saturday

The southbound right-turn lane at Kanuku Street will be closed. Right-turns will be permitted from the through lane.

Nighttime: 5:30 p.m. to 5:30 a.m., Monday to Saturday

Alternating lanes of eastbound Kamehameha Highway will be closed.

Nighttime: 8 p.m. to 7 a.m., Monday to Saturday

Alternating lanes of westbound Kamehameha Highway will be closed.

LOCATION: Kanuku St to Kaonohi St

24 Hours a Day, Seven Days a Week

The inside lane on eastbound Kamehameha Highway and the inside lane on westbound Kamehameha Highway will be closed.

Daytime: 7 a.m. to 2 p.m., Monday to Saturday

Alternating lanes of westbound Kamehameha Highway will be closed.

Nighttime: 5:30 p.m. to 5:30 a.m., Monday

Alternating lanes of eastbound Kamehameha Highway will be closed.

Nighttime: 8 p.m. to 5:30 a.m., Monday to Saturday

The eastbound left-turn from Kamehameha Highway onto Kaonohi Street will be closed. Motorists will be detoured to Pali Momi Street.

Nighttime: 8 p.m. to 5:30 a.m., Monday to Saturday

No left-turns or crossing at the Kaonohi Street intersection. Eastbound motorists will be detoured to Pali Momi Street. Westbound motorists will be detoured to Kanuku Street.



Nighttime: 8 p.m. to 7 a.m., Monday to Saturday

Alternating lanes of westbound Kamehameha Highway will be closed.

LOCATION: Kaonohi St to Pali Momi St

24 Hours a Day, Seven Days a Week

A single lane on eastbound Kamehameha Highway and a single lane on westbound Kamehameha Highway will be closed.



Daytime: 7 a.m. to 2 p.m., Monday to Saturday

One Alternating lane of westbound Kamehameha Highway will be closed.

Daytime: 8:30 a.m. to 3:30 p.m., Monday to Saturday

The outside lane of eastbound Kamehameha Highway will be closed.

Nighttime: 5:30 p.m. to 5:30 a.m., Monday to Saturday

Alternating lanes of eastbound Kamehameha Highway will be closed.

Nighttime: 8 p.m. to 5 a.m., Monday to Saturday

No left-turns at the Pali Momi Street intersection. Eastbound motorists will be detoured to Honomanu Street. Westbound motorists will be detoured to an alternate left-turn.

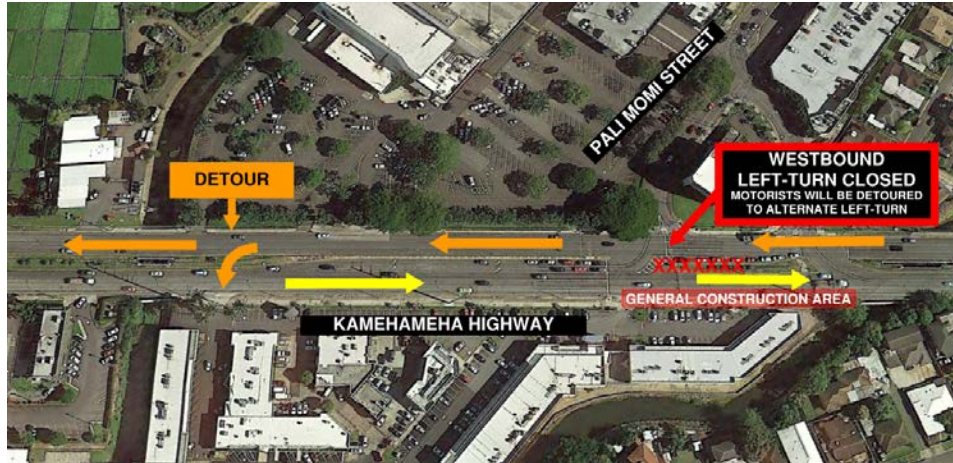
Nighttime: 8 p.m. to 7 a.m., Monday to Saturday

Alternating lanes of westbound Kamehameha Highway will be closed.

LOCATION: Pali Momi St to Honomanu St

24 hours a day, seven days a week

A single lane of eastbound Kamehameha Highway and a single lane on westbound Kamehameha Highway will be closed. The inside southbound left-turn lane of Pali Momi Street onto eastbound Kamehameha Highway will be closed. The westbound left-turn from Kamehameha Highway at Pali Momi Street will be closed. Motorists will be detoured to an alternate left-turn.



Daytime: 7 a.m. to 2 p.m., Monday to Saturday

Alternating lanes of westbound Kamehameha Highway will be closed.

Daytime: 7 a.m. to 2:30 p.m., Monday to Saturday

The inside left-turn lane of southbound Pali Momi Street onto eastbound Kamehameha Highway will be closed.

Nighttime: 5:30 p.m. to 5:30 a.m., Monday to Saturday

Alternating lanes of eastbound Kamehameha Highway will be closed.

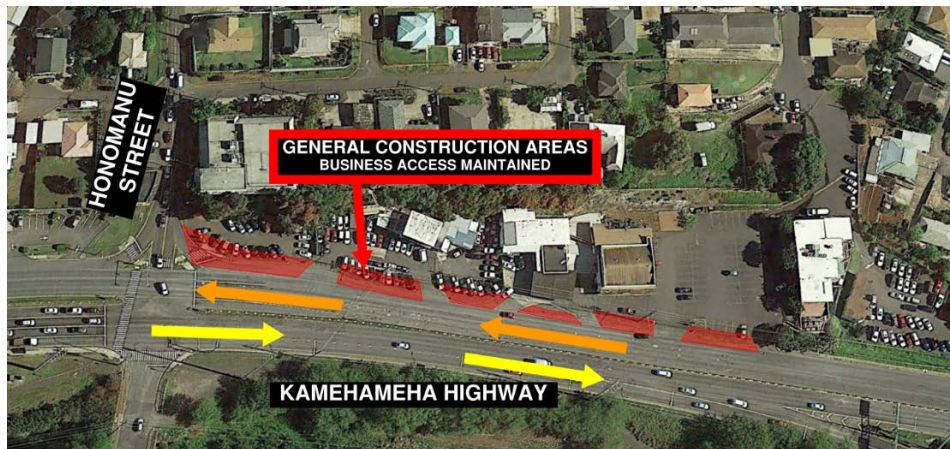
Nighttime: 8 p.m. to 7 a.m., Monday to Saturday

Alternating lanes of westbound Kamehameha Highway will be closed.

LOCATION: Honomanu Street to Salt Lake Boulevard

24 hours a day, seven days a week

A single lane on eastbound Kamehameha Highway and a single lane on westbound Kamehameha Highway will be closed.



Daytime: 7 a.m. to 2:30 p.m., Monday to Saturday

Alternating lanes of westbound Kamehameha Highway will be closed.

Nighttime: 5:30 p.m. to 5:30 a.m., Monday to Saturday

Alternating lanes of eastbound Kamehameha Highway will be closed.

Nighttime: 8 p.m. to 5:30 a.m., Monday to Saturday

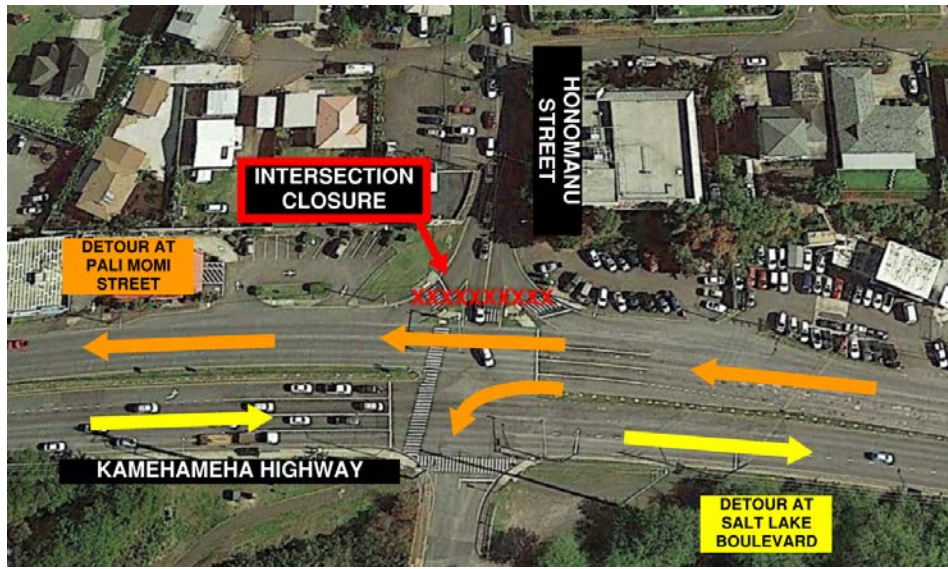
The westbound left-turn from Kamehameha Highway onto McGrew Loop, and the eastbound left-turn from Kamehameha Highway onto Honomanu Street will be closed. Westbound motorists will be detoured to Pali Momi Street. Eastbound motorists will be detoured to Salt Lake Boulevard.

Nighttime: 8 p.m. to 7 a.m., Monday to Saturday

Alternating lanes of westbound Kamehameha Highway will be closed.

Nighttime: 9 p.m. to 5:30 a.m., Monday to Saturday

No through traffic at the Honomanu Street intersection. The eastbound left-turn from Kamehameha Highway to Honomanu Street will be closed. Eastbound motorists will be detoured to Salt Lake Boulevard. Westbound motorists will be detoured to Pali Momi Street.



LOCATION: Salt Lake Boulevard to Kalaloa Street

24 hours a day, seven days a week

Right-turn from Kohomua Street onto westbound Kamehameha Highway will be closed. Motorists will be detoured to Kalaloa Street.



Daytime: 7 a.m. to 3:30 p.m., Monday to Saturday

Up to two lanes of westbound Kamehameha Highway will be closed.

Nighttime: 8 p.m. to 5:30 a.m., Monday to Saturday

The outside lane of westbound Kamehameha Highway will be closed.

Nighttime: 8 p.m. to 7 a.m., Monday to Saturday

Up to two lanes of westbound Kamehameha Highway will be closed.

Noise Impact: During potholing, vac truck, drilling and excavation work, expect increased noise levels from the unloading of materials and general machinery sounds.

Shoulder and median work signage/cones along the side of the road will mark the work area. Motorists are advised to drive with caution and provide a safe distance between their vehicles, the construction workers and equipment.