

## TRAFFIC UPDATE - Kamehameha Highway

Week of May 28, 2017

*\*Please note all left-turn and intersection closures mentioned below will not conflict with closures at adjacent intersections.*

### PEARL CITY

Tuesday, May 30 to Saturday, June 3, 2017

#### LOCATION: Waiawa Rd to Acacia Rd

**Daytime: 8:30 a.m. to 3:30 p.m., Tuesday to Saturday**

The inside left-turn lane of eastbound Kamehameha Highway and the inside westbound lane of Kamehameha Highway will be closed.

**Nighttime: 5:30 p.m. to 5:30 a.m., Tuesday to Saturday**

One inside lane of eastbound Kamehameha Highway will be closed.

**Nighttime: 8 p.m. to 7 a.m., Tuesday to Saturday**

One inside lane of westbound Kamehameha Highway will be closed.

#### LOCATION: Acacia Rd to Waimano Home Rd

**Daytime: 7 a.m. to 3:30 p.m., Tuesday to Saturday**

The left-turn from westbound Kamehameha Highway onto Acacia Road will be closed. Motorists will be detoured at Waiawa Road.

**Daytime: 7 a.m. to 2:30 p.m., Tuesday to Saturday**

The inside lane on westbound Kamehameha Highway will be closed.

**Nighttime: 5:30 p.m. to 5:30 a.m., Tuesday to Saturday**

Alternating lanes of eastbound Kamehameha Highway will be closed.

**Nighttime: 8 p.m. to 7 a.m., Tuesday to Saturday**

Alternating lanes of westbound Kamehameha Highway will be closed.

**Nighttime: 8 p.m. to 5:30 a.m., Tuesday to Saturday**

The eastbound left turn from Kamehameha Highway onto Waimano Home Road will be closed. Motorists will be detoured to Puu Momi Street.

#### LOCATION: Waimano Home Rd to Puu Momi St

**24 Hours a Day, Seven Days a Week**

A single inside lane on eastbound Kamehameha Highway will be closed. Two eastbound lanes will remain open during peak travel times.

**Daytime: 7 a.m. to 2:30 p.m., Tuesday to Saturday**

One inside westbound lane of Kamehameha Highway will be closed.

**Nighttime: 5:30 p.m. to 5:30 a.m., Tuesday to Saturday**

Alternating lanes of eastbound Kamehameha Highway will be closed.

**Nighttime: 8 p.m. to 7 a.m., Tuesday to Saturday**

Alternating lanes of westbound Kamehameha Highway will be closed.

#### LOCATION: Puu Momi St to Puu Poni St

**24 Hours a Day, 7 Days a Week**

A single inside lane on eastbound Kamehameha Highway will be closed. Two eastbound lanes will remain open during peak travel times.

**Daytime: 7 a.m. to 2:30 p.m., Tuesday to Saturday**

One inside westbound lane of Kamehameha Highway will be closed.

**Daytime: 8:30 a.m. to 3:30 p.m., Tuesday to Saturday**

The eastbound left-turn from Kamehameha Highway onto Puu Poni Street will be closed. Motorists will be detoured to Puu Momi Street or Kuleana Road.

**Nighttime: 5:30 p.m. to 5:30 a.m., Tuesday to Saturday**

Alternating lanes of eastbound Kamehameha Highway will be closed.

**Nighttime: 8 p.m. to 7 a.m., Tuesday to Saturday**

Alternating lanes of eastbound Kamehameha Highway will be closed.

**LOCATION: Puu Poni St to Kuleana Rd**

**24 Hours a Day, Seven Days a Week**

A single inside lane on eastbound Kamehameha Highway will be closed. Two eastbound lanes will remain open during peak travel times.

**Daytime: 7 a.m. to 2:30 p.m., Tuesday to Saturday**

The inside lane of westbound Kamehameha Highway will be closed.

**Nighttime: 5:30 p.m. to 5:30 a.m., Tuesday to Saturday**

Alternating lanes of eastbound Kamehameha Highway will be closed.

**Nighttime: 8 p.m. to 7 a.m., Tuesday to Saturday**

Alternating lanes of westbound Kamehameha Highway will be closed.

**LOCATION: Kuleana Rd to Kaahumanu St**

**24 Hours a Day, Seven Days a Week**

A single inside lane on eastbound Kamehameha Highway and a single lane on westbound Kamehameha Highway will be closed.

**Daytime: 7 a.m. to 2 p.m., Tuesday to Saturday**

Alternating lanes of westbound Kamehameha Highway will be closed.

**Nighttime: 5:30 p.m. to 5:30 a.m., Tuesday to Saturday**

Alternating lanes of eastbound Kamehameha Highway will be closed.

**Nighttime: 8 p.m. to 7 a.m., Tuesday to Saturday**

Alternating lanes of westbound Kamehameha Highway will be closed.

**Nighttime: 8 p.m. to 5:30 a.m., Tuesday to Saturday**

The eastbound left turn from Kamehameha Highway onto Kaahumanu Street will be closed. Motorists will be detoured to Puu Momi Street.

**AIEA**

**Tuesday, May 29 to Saturday, June 3, 2017**

**LOCATION: Kaahumanu St to Hekaha St**

**24 Hours a Day, Seven Days a Week**

One lane on eastbound Kamehameha Highway and the inside lane on westbound Kamehameha Highway will be closed.

**Daytime: 7 a.m. to 2 p.m., Tuesday to Saturday**

Alternating lanes of westbound Kamehameha Highway will be closed.

**Nighttime: 5:30 p.m. to 5:30 a.m., Tuesday to Saturday**

Alternating lanes of eastbound Kamehameha Highway will be closed.

**Nighttime: 8 p.m. to 7 a.m., Tuesday to Saturday**

Alternating lanes of westbound Kamehameha Highway will be closed.

**LOCATION: Hekaha St to Kanuku St**

**24 Hours a Day, Seven Days a Week**

One lane on eastbound Kamehameha Highway and one lane on westbound Kamehameha Highway will be closed.

**Daytime: 7 a.m. to 2 p.m., Tuesday to Saturday**

Alternating lanes of westbound Kamehameha Highway will be closed.

**Daytime: 8:30 a.m. to 3:30 p.m., Tuesday to Saturday**

The outside lane of eastbound Kamehameha Highway will be closed.

**Nighttime: 5:30 p.m. to 5:30 a.m., Tuesday to Saturday**

Alternating lanes of eastbound Kamehameha Highway will be closed.

**Nighttime: 8 p.m. to 7 a.m., Tuesday to Saturday**

Alternating lanes of westbound Kamehameha Highway will be closed.

**LOCATION: Kanuku St to Kaonohi St**

**24 Hours a Day, Seven Days a Week**

One lane on eastbound Kamehameha Highway and the inside lane on westbound Kamehameha Highway will be closed.

**Daytime: 7 a.m. to 2 p.m., Tuesday to Saturday**

Alternating lanes of westbound Kamehameha Highway will be closed.

**Nighttime: 5:30 p.m. to 5:30 a.m., Tuesday**

Alternating lanes of eastbound Kamehameha Highway will be closed.

**Nighttime: 8 p.m. to 5:30 a.m., Tuesday to Saturday**

The eastbound left-turn from Kamehameha Highway onto Kaonohi Street will be closed. Motorists will be detoured to Pali Momi Street.

**Nighttime: 8 p.m. to 5:30 a.m., Tuesday to Saturday**

No left-turns from Kaonohi Street intersection onto Kamehameha Highway. Eastbound motorists will be detoured to Pali Momi Street. Westbound motorists will be detoured to Kanuku Street.



**Nighttime: 8 p.m. to 5:30 a.m., Tuesday to Saturday**

The eastbound left-turn from Kamehameha Highway onto Kaonohi Street will be closed. Motorists will be detoured at Pali Momi Street.

**Nighttime: 8 p.m. to 7 a.m., Tuesday to Saturday**

Alternating lanes of westbound Kamehameha Highway will be closed.

**LOCATION: Kaonohi St to Pali Momi St**

**24 Hours a Day, Seven Days a Week**

A single lane on eastbound Kamehameha Highway and a single lane on westbound Kamehameha Highway will be closed.



**Daytime: 7 a.m. to 2 p.m., Tuesday to Saturday**

One Alternating lane of westbound Kamehameha Highway will be closed.

**Daytime: 8:30 a.m. to 3:30 p.m., Tuesday to Saturday**

The outside lane of eastbound Kamehameha Highway will be closed.

**Nighttime: 5:30 p.m. to 5:30 a.m., Tuesday to Saturday**

Alternating lanes of eastbound Kamehameha Highway will be closed.

**Nighttime: 8 p.m. to 5 a.m., Tuesday to Saturday**

No left-turns at the Pali Momi Street intersection. Eastbound motorists will be detoured to Honomanu Street. Westbound motorists will be detoured to an alternate left-turn.

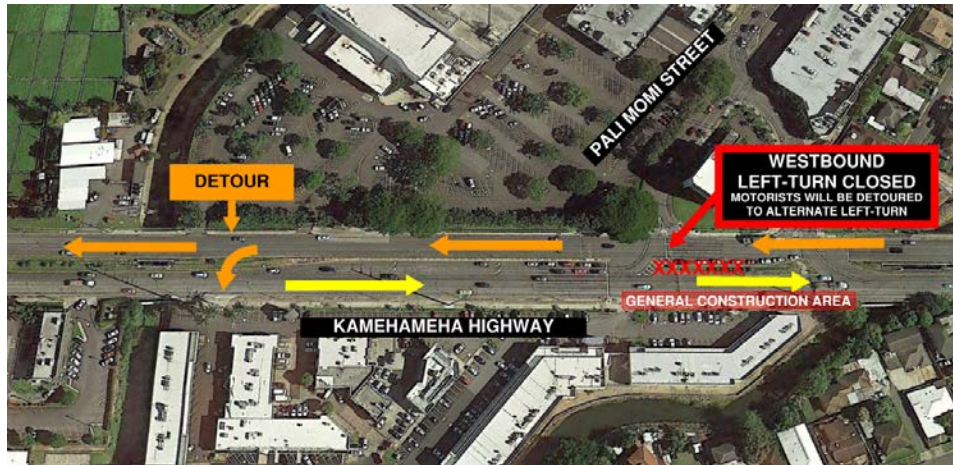
**Nighttime: 8 p.m. to 7 a.m., Tuesday to Saturday**

Alternating lanes of westbound Kamehameha Highway will be closed.

**LOCATION: Pali Momi St to Honomanu St**

**24 hours a day, seven days a week**

A single lane of eastbound Kamehameha Highway and a single lane on westbound Kamehameha Highway will be closed. The westbound left-turn from Kamehameha Highway at Pali Momi Street will be closed. Motorists will be detoured to an alternate left-turn.



**Daytime: 7 a.m. to 2 p.m., Tuesday to Saturday**

Alternating lanes of westbound Kamehameha Highway will be closed.

**Daytime: 7 a.m. to 2:30 p.m., Tuesday to Saturday**

The inside left-turn lane of southbound Pali Momi Street onto eastbound Kamehameha Highway will be closed.

**Nighttime: 5:30 p.m. to 5:30 a.m., Tuesday to Saturday**

Alternating lanes of eastbound Kamehameha Highway will be closed.

**Nighttime: 8 p.m. to 7 a.m., Tuesday to Saturday**

Alternating lanes of westbound Kamehameha Highway will be closed.

**LOCATION: Honomanu Street to Salt Lake Boulevard**

**24 hours a day, seven days a week**

A single lane on eastbound Kamehameha Highway and a single lane on westbound Kamehameha Highway will be closed.





**Daytime: 7 a.m. to 2:30 p.m., Tuesday to Saturday**

Alternating lanes of westbound Kamehameha Highway will be closed.

**Nighttime: 5:30 p.m. to 5:30 a.m., Tuesday to Saturday**

Alternating lanes of eastbound Kamehameha Highway will be closed.

**Nighttime: 8 p.m. to 5:30 a.m., Tuesday to Saturday**

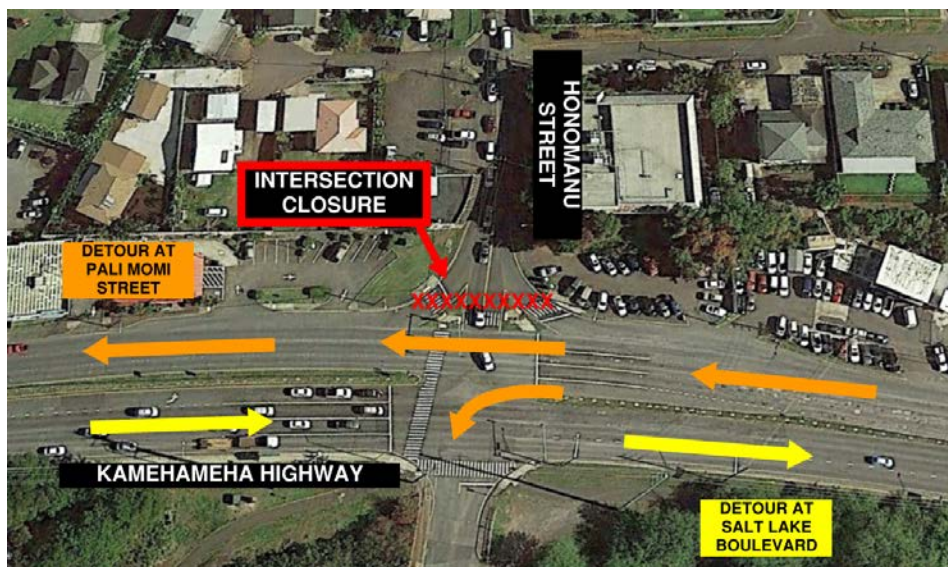
The westbound left-turn from Kamehameha Highway onto McGrew Loop, and the eastbound left-turn from Kamehameha Highway onto Honomanu Street will be closed. Westbound motorists will be detoured to Pali Momi Street. Eastbound motorists will be detoured to Salt Lake Boulevard.

**Nighttime: 8 p.m. to 7 a.m., Tuesday to Saturday**

Alternating lanes of westbound Kamehameha Highway will be closed.

**Nighttime: 9 p.m. to 5:30 a.m., Tuesday to Saturday**

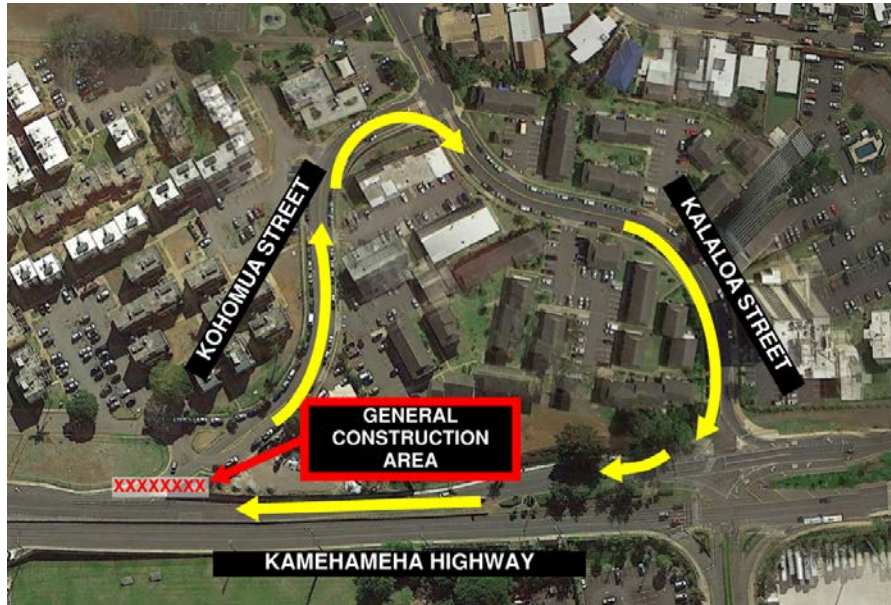
No through traffic at the Honomanu Street intersection. The eastbound left-turn from Kamehameha Highway to Honomanu Street will be closed. Eastbound motorists will be detoured to Salt Lake Boulevard. Westbound motorists will be detoured to Pali Momi Street. The outside lane of westbound Kamehameha Highway will be closed.



**LOCATION: Salt Lake Boulevard to Kalaloa Street**

**24 hours a day, seven days a week**

Right-turn from Kohomua Street onto westbound Kamehameha Highway will be closed. Motorists will be detoured to Kalaloa Street.



**Daytime: 7 a.m. to 3:30 p.m., Tuesday to Saturday**

Up to two lanes of westbound Kamehameha Highway will be closed.

**Nighttime: 8 p.m. to 5:30 a.m., Tuesday to Saturday**

The outside lane of westbound Kamehameha Highway will be closed.

**Nighttime: 8 p.m. to 7 a.m., Tuesday to Saturday**

Up to two lanes of westbound Kamehameha Highway will be closed.

**Noise Impact: During potholing, vac truck, drilling and excavation work, expect increased noise levels from the unloading of materials and general machinery sounds.**

Shoulder and median work signage/cones along the side of the road will mark the work area. Motorists are advised to drive with caution and provide a safe distance between their vehicles, the construction workers and equipment.