

## TRAFFIC UPDATE - Airport

**Week of April 22, 2018**

### **KAMEHAMEHA HIGHWAY – PEARL HARBOR AREA**

**Sunday, April 22, 2018 to Saturday, April 28, 2018**

#### **LOCATION: Ford Island Bridge/Salt Lake Boulevard to Kohomua Street**

**Daytime: 6:30 a.m. to 2:30 p.m., Monday to Friday**

Alternating lanes of westbound Kamehameha Highway will be closed.

**Daytime: 8:30 a.m. to 5:00 p.m., Monday to Friday**

Alternating lanes of eastbound Kamehameha Highway will be closed.

**Nighttime: 6:00 p.m. to 5:00 a.m., overnights Monday to Friday**

Alternating lanes of eastbound Kamehameha Highway will be closed.

**Nighttime: 8:00 p.m. to 5:00 a.m., overnights Monday to Friday**

Alternating lanes of westbound Kamehameha Highway will be closed.

#### **LOCATION: Kohomua Street to Arizona Memorial Place/Kalaloa Street**

**24 Hours a Day, Seven Days a Week**

The inside lanes of eastbound Kamehameha Highway will be closed.

**Daytime: 6:30 a.m. to 2:30 p.m., Monday to Friday**

Alternating lanes of westbound Kamehameha Highway will be closed.

**Daytime: 8:30 a.m. to 5:00 p.m., Monday to Friday**

Alternating lanes of eastbound Kamehameha Highway will be closed.

**Nighttime: 6:00 p.m. to 5:00 a.m., overnights Monday to Friday**

Alternating lanes of eastbound Kamehameha Highway will be closed.

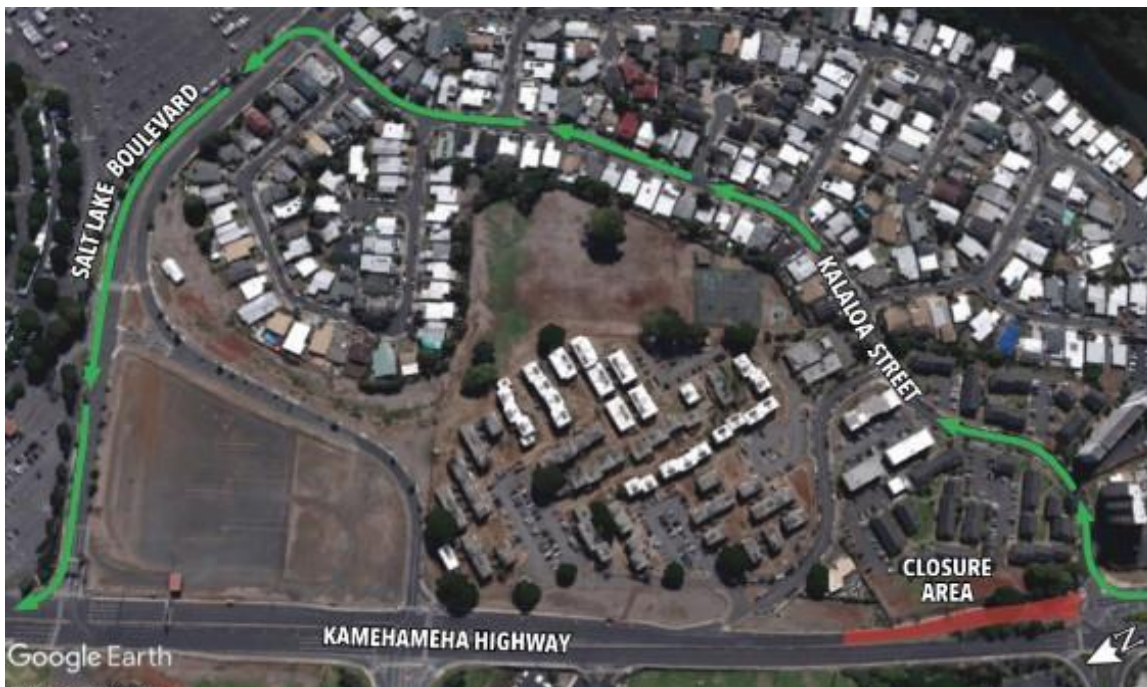
**Nighttime: 8:00 p.m. to 5:00 a.m., overnights Monday to Friday**

Alternating lanes of westbound Kamehameha Highway will be closed.

#### **LOCATION: Kalaloa Street Intersection**

**Nighttime: 8:00 p.m. to 5:00 a.m., overnights Monday to Friday**

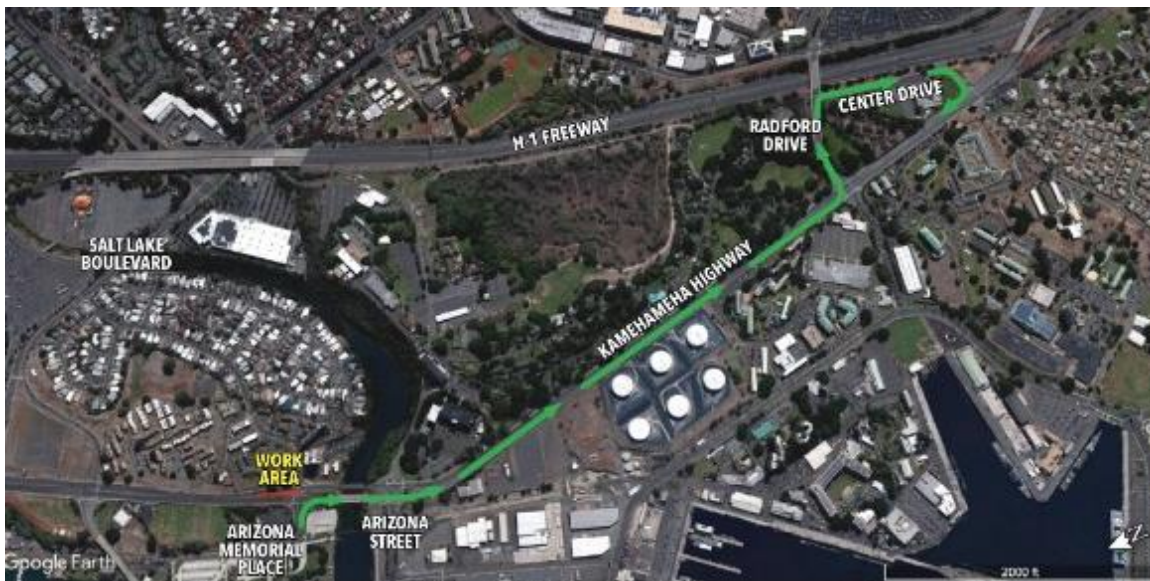
Westbound Kamehameha Highway will be closed. Motorists will be detoured onto Kalaloa Street, then Salt Lake Boulevard to access westbound Kamehameha Highway.



**LOCATION: Arizona Memorial Place Intersection**

**24 Hours a Day, Seven Days a Week**

The left-turn from Arizona Memorial Place onto westbound Kamehameha Highway will be closed. Motorists will be detoured to Radford Drive and Center Drive to access westbound Kamehameha Highway.



**Nighttime: 6:00 p.m. to 5:00 a.m., overnights Monday to Friday**

The left-turn from westbound Kamehameha Highway onto Arizona Memorial Place will be closed. Motorists will be detoured to a u-turn at Salt Lake Boulevard.

**LOCATION: Arizona Memorial Place/Kalaloa Street to Halawa Drive/Arizona Street**

**24 Hours a Day, Seven Days a Week**

The inside lanes of eastbound Kamehameha Highway will be closed.

**Daytime: 6:30 a.m. to 2:30 p.m., Monday to Friday**

Alternating lanes of westbound Kamehameha Highway will be closed.

**Daytime: 8:30 a.m. to 5:00 p.m., Monday to Friday**

Alternating lanes of eastbound Kamehameha Highway will be closed.

**Nighttime: 6:00 p.m. to 5:00 a.m., overnights Monday to Friday**

Alternating lanes of eastbound Kamehameha Highway will be closed.

**Nighttime: 8:00 p.m. to 5:00 a.m., overnights Monday to Friday**

Alternating lanes of westbound Kamehameha Highway will be closed.

**LOCATION: Halawa Drive Intersection (Borchers Gate)**

**Nighttime: 6:00 p.m. to 5:00 a.m., overnights Monday to Friday**

The left-turn from eastbound Kamehameha Highway onto Halawa Drive will be closed. Motorists will be detoured to Radford Drive, Center Drive, and then westbound Kamehameha Highway to access Borchers Gate.



**Nighttime: 6:00 p.m. to 5:00 a.m., overnights Monday to Friday**

The left-turn from Halawa Drive onto eastbound Kamehameha Highway will be intermittently closed. Motorists will be detoured to a u-turn at Arizona Memorial Place.



**LOCATION: Arizona Drive Intersection (Halawa Gate)**

**Nighttime: 6:00 p.m. to 5:00 a.m., overnights Monday to Friday**

The left-turn from westbound Kamehameha Highway onto Arizona Street will be closed. Motorists will be detoured to a u-turn at Arizona Memorial Place.

**LOCATION: Halawa Drive/Arizona Street to Radford Drive/Makalapa Road**

**24 Hours a Day, Seven Days a Week**

The inside lanes of eastbound Kamehameha Highway will be closed.

**Daytime: 6:30 a.m. to 2:30 p.m., Monday to Friday**

Alternating lanes of westbound Kamehameha Highway will be closed.

**Daytime: 8:30 a.m. to 5:00 p.m., Monday to Friday**

Alternating lanes of eastbound Kamehameha Highway will be closed.

**Nighttime: 6:00 p.m. to 5:00 a.m., overnights Monday to Friday**

Alternating lanes of eastbound Kamehameha Highway will be closed.

**Nighttime: 8:00 p.m. to 5:00 a.m., overnights Monday to Friday**

Alternating lanes of westbound Kamehameha Highway will be closed.

**LOCATION: Radford Drive Intersection**

**Nighttime: 6:00 p.m. to 5:00 a.m., overnights Monday to Friday**

The left-turn from eastbound Kamehameha Highway onto Radford Drive will be closed.

Motorists will be detoured to u-turn at Valkenburgh Street.

**Nighttime: 6:00 p.m. to 5:00 a.m., overnights Monday to Friday**

The left-turn from Radford Drive onto eastbound Kamehameha Highway will be closed.

Motorists will be detoured to a u-turn at Arizona Street.

**Nighttime: 6:00 p.m. to 5:00 a.m., overnights Monday to Friday**

Local traffic only. No through traffic between Makalapa Road to Radford Drive. Motorists will be detoured to a u-turn at Arizona Street to access Makalapa Gate.

**LOCATION: Makalapa Road Intersection (Makalapa Gate)**

**Nighttime: 6:00 p.m. to 5:00 a.m., overnights Monday to Friday**

The left-turn from westbound Kamehameha Highway onto Makalapa Road will be closed. Motorists will be detoured to a u-turn at Arizona Street to access Makalapa Gate.

**Nighttime: 6:00 p.m. to 5:00 a.m., overnights Monday to Friday**

The left-turn from Makalapa Road onto westbound Kamehameha Highway will be closed. Motorists will be detoured to a u-turn at Valkenburgh Street.

**Nighttime: 6:00 p.m. to 5:00 a.m., overnights Monday to Friday**

Local traffic only. No through traffic between Makalapa Road to Radford Drive. Motorists will be detoured to a u-turn at Valkenburgh Street

**LOCATION: Radford Drive/Makalapa Road to Plantation Drive/Center Drive**

**24 Hours a Day, Seven Days a Week**

The inside lanes of eastbound Kamehameha Highway will be closed.

**Daytime: 6:30 a.m. to 2:30 p.m., Monday to Friday**

Alternating lanes of westbound Kamehameha Highway will be closed.

**Daytime: 8:30 a.m. to 5:00 p.m., Monday to Friday**

Alternating lanes of eastbound Kamehameha Highway will be closed.

**Nighttime: 6:00 p.m. to 5:00 a.m., overnights Monday to Friday**

Alternating lanes of eastbound Kamehameha Highway will be closed.

**Nighttime: 8:00 p.m. to 5:00 a.m., overnights Monday to Friday**

Alternating lanes of westbound Kamehameha Highway will be closed.

***For the safety of crews and the traveling public, the speed limit has been reduced to 25 mph on Kamehameha Highway between Salt Lake Boulevard/ Ford Island Bridge and Center Drive. The highway has been reduced to two lanes in each direction during construction. Bike lanes have been removed due to space constraints. Please drive safely; observe the posted speed limit, follow construction and directional signs, and share the road with bicyclists.***

***Bus routes and stops may be modified or closed during construction. Please call (808) 848-5555 or visit [www.TheBus.org](http://www.TheBus.org).***

**PEARL HARBOR INTERCHANGE**

**Sunday, April 22, 2018 to Saturday, April 28, 2018**

**LOCATION: Kamehameha Highway to Nimitz Highway**

**Nighttime: 8:00 p.m. to 4:00 a.m., overnights Monday through Friday**

The eastbound Kamehameha Highway off-ramp onto eastbound H-1 Highway will be closed. Motorists will be detoured to eastbound Nimitz Highway.

**LOCATION: Kamehameha Highway to Nimitz Highway**

**24 Hours a Day, Seven Days a Week**

The eastbound ramp from Kamehameha Highway onto eastbound Nimitz Highway will be reduced to one lane.

**24 Hours a Day, Seven Days a Week**

The westbound H-1 Highway off-ramp onto westbound Kamehameha Highway will be reduced to two lanes.

**Daytime: 8:30 a.m. to 3:00 p.m., Monday to Friday**

The westbound H-1 Highway off-ramp onto westbound Kamehameha Highway will be reduced to one lane.

**Nighttime: 8:00 p.m. to 4:00 a.m., overnights Monday through Friday**

The eastbound ramp from Kamehameha Highway onto eastbound Nimitz Highway will be closed.

Motorists will be detoured to eastbound H-1 Highway.

**LOCATION: Nimitz Highway Off-Ramp and Joint-Base Pearl Harbor-Hickam Off-Ramp to Kamehameha Highway**

**24 Hours a Day, Seven Days a Week**

The ramp to westbound Kamehameha Highway from westbound H-1 Highway, westbound Nimitz Highway, and JBPHH exit will be reduced to three lanes for the duration of project construction.

**Nighttime: 8:00 p.m. to 4:00 a.m., overnights Monday through Friday**

The off-ramps from westbound Nimitz Highway and Joint-Base Pearl Harbor-Hickam onto westbound Kamehameha Highway will be closed. Motorists will be detoured to Valkenburgh Street, Bougainville Drive, then Radford Drive to access westbound Kamehameha Highway.

**LOCATION: H-1 On-Ramp from Joint-Base Pearl Harbor-Hickam**

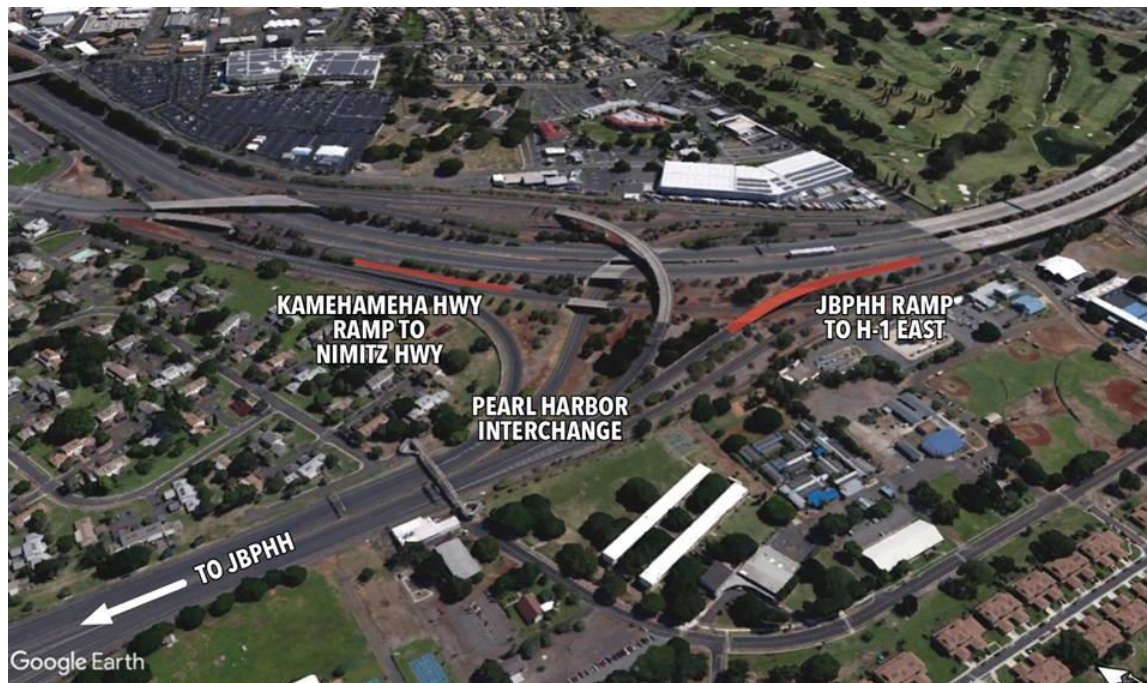
**24 Hours a Day, Seven Days a Week**

The ramp from Joint-Base Pearl Harbor-Hickam onto eastbound H-1 Highway will be reduced to one lane.

**Nighttime: 8:00 p.m. to 4:00 a.m., overnights Monday through Friday**

The eastbound ramp from Joint-Base Pearl Harbor-Hickam onto eastbound H-1 Highway will be closed.

Motorists will be detoured to Nimitz Highway.



**NIMITZ**

**Sunday, April 22, 2018 to Saturday, April 28, 2018**

**LOCATION: Pearl Harbor Interchange to Main Street**

**24 Hours a Day, Seven Days a Week**

Eastbound Nimitz Highway will be reduced to two lanes.

**Daytime: 8:30 a.m. to 3:00 p.m., Monday to Friday**

One lane of eastbound Nimitz Highway will be closed.

**Nighttime: 8:00 p.m. to 5:00 a.m., overnights Sunday to Friday**

One lane of eastbound Nimitz Highway will be closed.

***Work may include intermittent lane closures at the Valkenburgh Street intersection, including various left-turn and right-turn pockets. Special-duty officers will assist with traffic movements as needed. Bus stops will be relocated during construction. Pedestrians will be detoured around the construction area.***



**LOCATION: Main Street to Aolele Street**

**Daytime: 8:30 a.m. to 3:00 p.m., Monday to Friday**

Up to two lanes of eastbound Nimitz Highway will be closed.

**Nighttime: 8:00 p.m. to 5:00 a.m., overnights Monday to Friday**

Up to two lanes of eastbound Nimitz Highway will be closed.

### **AIRPORT**

**Sunday, April 22, 2018 to Saturday, April 28, 2018**

**LOCATION: Aolele Street between Paiea Street and Lagoon Drive**

**Nighttime: 10:00 p.m. to 4:00 a.m., overnights Monday to Friday**

One lane will be closed. On-site flaggers will be controlling traffic bi-directional in remaining lane.

**LOCATION: Ualena Street between Ohohia Street and Lagoon Drive**

**Nighttime: 8:00 p.m. to 5:00 a.m., overnights Monday to Friday**

One lane will be closed. On-site flaggers will be controlling traffic bi-directional in remaining lane. No street parking will be allowed during construction work hours.

### **KALIHI**

**Sunday, April 22, 2018 to Saturday, April 28, 2018**

**LOCATION: Kamehameha Highway between Middle Street and Puuhale Road**

**Nighttime: 8:00 p.m. to 5:00 a.m., overnights Monday to Friday**

Up to two lanes will be closed on eastbound and westbound Kamehameha Highway. Work will include intermittent closures near the Middle Street intersection. Various left-turn and right-turn pockets may be closed. Highway ramps may also be affected. Special Duty Officers will be on-site to assist with traffic movements. Bike lanes, bus stops and sidewalks may be impacted by the work.