

TRAFFIC UPDATE - Airport

Week of April 7, 2019

KAMEHAMEHA HIGHWAY – PEARL HARBOR AREA

Sunday, April 7, 2019 to Saturday, April 13, 2019

LOCATION: Ford Island Bridge/Salt Lake Boulevard to Kohomua Street

Daytime: 6:30 a.m. to 2:30 p.m., Monday to Friday

Alternating lanes of westbound Kamehameha Highway will be closed.

Daytime: 8:30 a.m. to 5:00 p.m., Monday to Friday

Alternating lanes of eastbound Kamehameha Highway will be closed.

Nighttime: 8:00 p.m. to 5:00 a.m., overnights Monday to Friday

Alternating lanes of eastbound Kamehameha Highway will be closed.

Nighttime: 8:00 p.m. to 5:00 a.m., overnights Monday to Friday

Alternating lanes of westbound Kamehameha Highway will be closed.

LOCATION: Kohomua Street to Arizona Memorial Place/Kalaloa Street

24 Hours a Day, Seven Days a Week

The inside lanes of eastbound Kamehameha Highway will be closed.

Daytime: 6:30 a.m. to 2:30 p.m., Monday to Friday

Alternating lanes of westbound Kamehameha Highway will be closed.

Daytime: 8:30 a.m. to 5:00 p.m., Monday to Friday

Alternating lanes of eastbound Kamehameha Highway will be closed.

Nighttime: 6:00 p.m. to 5:00 a.m., overnights Monday to Friday

Alternating lanes of eastbound Kamehameha Highway will be closed.

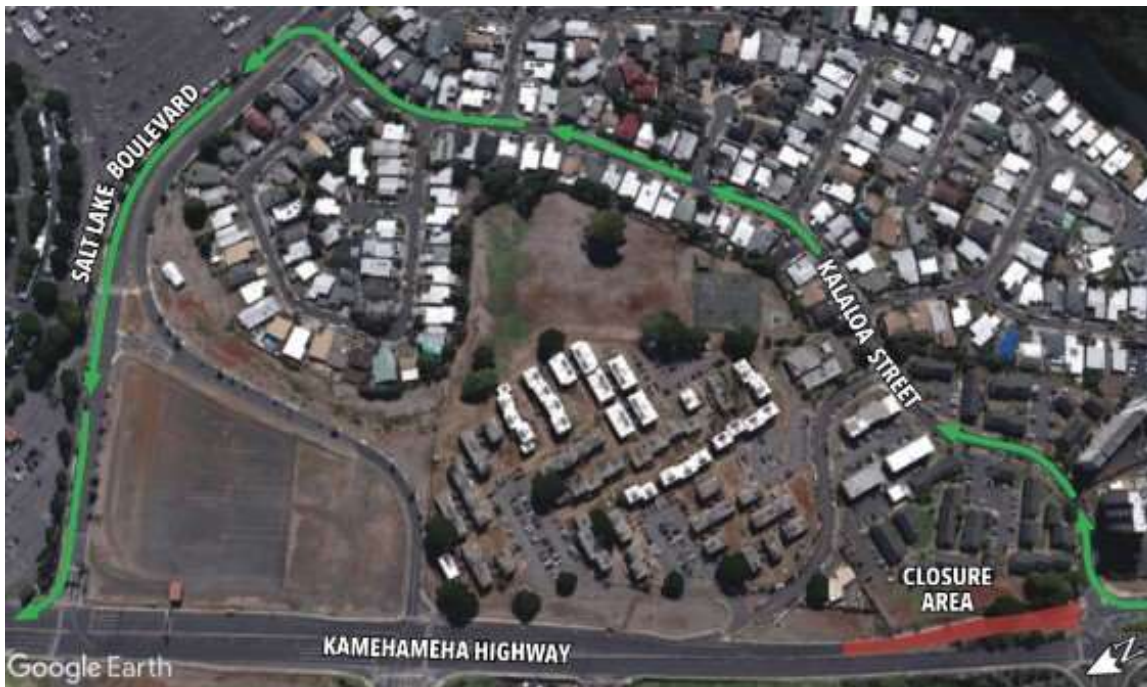
Nighttime: 8:00 p.m. to 5:00 a.m., overnights Monday to Friday

Alternating lanes of westbound Kamehameha Highway will be closed.

LOCATION: Kalaloa Street Intersection

Daytime: 6:00 a.m. to 6:00 p.m., Sunday April 7th and Saturday, April 13th

All westbound lanes on Kamehameha Highway will be closed. Motorists will be detoured onto Kalaloa Street, then Salt Lake Boulevard to access westbound Kamehameha Highway.



LOCATION: Arizona Memorial Place Intersection

24 Hours a Day, Seven Days a Week

The left-turn from Arizona Memorial Place onto westbound Kamehameha Highway will be closed. Motorists will be detoured to Radford Drive and Center Drive to access westbound Kamehameha Highway.



LOCATION: Arizona Memorial Place/Kalaloa Street to Halawa Drive/Arizona Street

24 Hours a Day, Seven Days a Week

The inside lanes of eastbound Kamehameha Highway will be closed.

Daytime: 6:30 a.m. to 2:30 p.m., Monday to Friday

Alternating lanes of westbound Kamehameha Highway will be closed.

Daytime: 8:30 a.m. to 5:00 p.m., Monday to Friday

Alternating lanes of eastbound Kamehameha Highway will be closed.

Nighttime: 6:00 p.m. to 5:00 a.m., overnight Monday to Friday

Alternating lanes of eastbound Kamehameha Highway will be closed.

Nighttime: 8:00 p.m. to 5:00 a.m., overnights Monday to Friday

Alternating lanes of westbound Kamehameha Highway will be closed.

LOCATION: Halawa Drive/Arizona Street to Radford Drive/Makalapa Road

Daytime: 6:30 a.m. to 2:30 p.m., Monday to Friday

Alternating lanes of westbound Kamehameha Highway will be closed.

Daytime: 8:30 a.m. to 5:00 p.m., Monday to Friday

Alternating lanes of eastbound Kamehameha Highway will be closed.

LOCATION: Radford Drive/Makalapa Road to Plantation Drive/Center Drive

Daytime: 6:30 a.m. to 2:30 p.m., Monday to Friday

Alternating lanes of westbound Kamehameha Highway will be closed.

Daytime: 8:30 a.m. to 5:00 p.m., Monday to Friday

Alternating lanes of eastbound Kamehameha Highway will be closed.

Nighttime: 8:00 p.m. to 5:00 a.m., overnights Monday to Friday

Alternating lanes of eastbound Kamehameha Highway will be closed.

LOCATION: Center Drive Intersection

Nighttime: 8:00 p.m. to 5:00 a.m. overnights Monday to Friday

Intermittent lane closures on Kamehameha Highway at the Center Drive intersection, including various left turn and right turn pockets. Special-duty officers will assist with traffic movements as needed. Bus stops may be relocated during construction. Pedestrians will be detoured around the construction area.



For the safety of crews and the traveling public, the speed limit has been reduced to 25 mph on Kamehameha Highway between Salt Lake Boulevard/ Ford Island Bridge and Center Drive. The highway has been reduced to two lanes in each direction during construction. Bike lanes have been removed due to space constraints. Please drive safely; observe the posted speed limit, follow construction and directional signs, and share the road with bicyclists.

Bus routes and stops may be modified or closed during construction. Please call (808) 848-5555 or visit www.TheBus.org.

RADFORD DRIVE

Sunday, April 7, 2019 to Saturday, April 13, 2019

LOCATION: Kamehameha Highway to Center Drive

Daytime: 8:30 a.m. to 3:00 p.m., Monday to Friday

One lane may be closed in both directions.

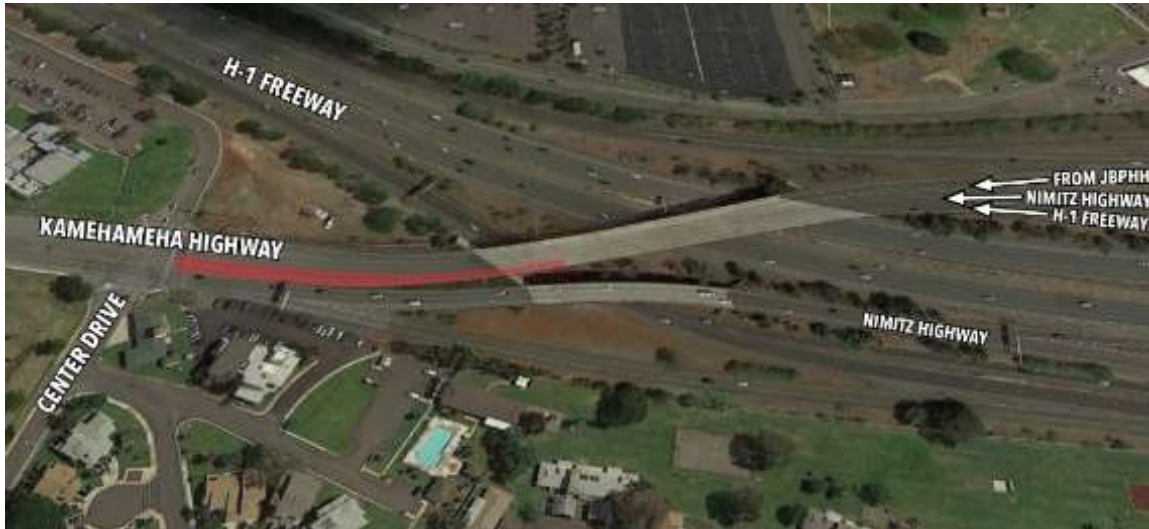
PEARL HARBOR INTERCHANGE

Sunday, April 7, 2019 to Saturday, April 13, 2019

LOCATION: Nimitz Highway Off-Ramp and Joint-Base Pearl Harbor-Hickam Off-Ramp to Kamehameha Highway

24 Hours a Day, Seven Days a Week

The ramp to westbound Kamehameha Highway from westbound H-1 Highway, westbound Nimitz Highway, and JBPHH exit will be reduced to three lanes for the duration of project construction.



LOCATION: Kamehameha Highway to H-1 Freeway On-Ramp

24 Hours a Day, Seven Days a Week

The eastbound ramp from Kamehameha Highway onto eastbound H-1 Highway will be reduced to one lane.

LOCATION: Kamehameha Highway to Nimitz Highway

24 Hours a Day, Seven Days a Week

The eastbound ramp from Kamehameha Highway onto eastbound Nimitz Highway will be reduced to one lane.

LOCATION: H-1 On-Ramp from Joint-Base Pearl Harbor-Hickam

24 Hours a Day, Seven Days a Week

The ramp from Joint-Base Pearl Harbor-Hickam onto eastbound H-1 Highway will be reduced to one lane.



NIMITZ HIGHWAY

Sunday, April 7, 2019 to Saturday, April 13, 2019

LOCATION: Pearl Harbor Interchange to Main Street

24 Hours a Day, Seven Days a Week

Eastbound Nimitz Highway will be reduced to two lanes.

Daytime: 8:30 a.m. to 3:00 p.m., Monday to Friday

One lane of eastbound Nimitz Highway will be closed.

Nighttime: 8:00 p.m. to 4:00 a.m., overnights Monday to Friday

One lane of eastbound Nimitz Highway will be closed.

Work may include intermittent lane closures at the Valkenburgh Street intersection, including various left-turn and right-turn pockets. Special-duty officers will assist with traffic movements as needed. Bus stops will be relocated during construction. Pedestrians will be detoured around the construction area.



LOCATION: Main Street Intersection

24 Hours a Day, Friday April 5th, at 8:00 pm to Monday, April 8th, at 4:00 am

All turning movements into and out of Main Street from Nimitz Highways eastbound will be closed. Access to Main Street will remain from Valkenburgh Street.

LOCATION: Main Street to Aolele Street

Daytime: 8:00 a.m. to 3:00 p.m., Monday to Friday

Up to two lanes of eastbound Nimitz Highway will be closed. The right turn pocket from Nimitz Highway eastbound onto Aolele Street may be closed. Motorists may execute the right turn from the through-lane.

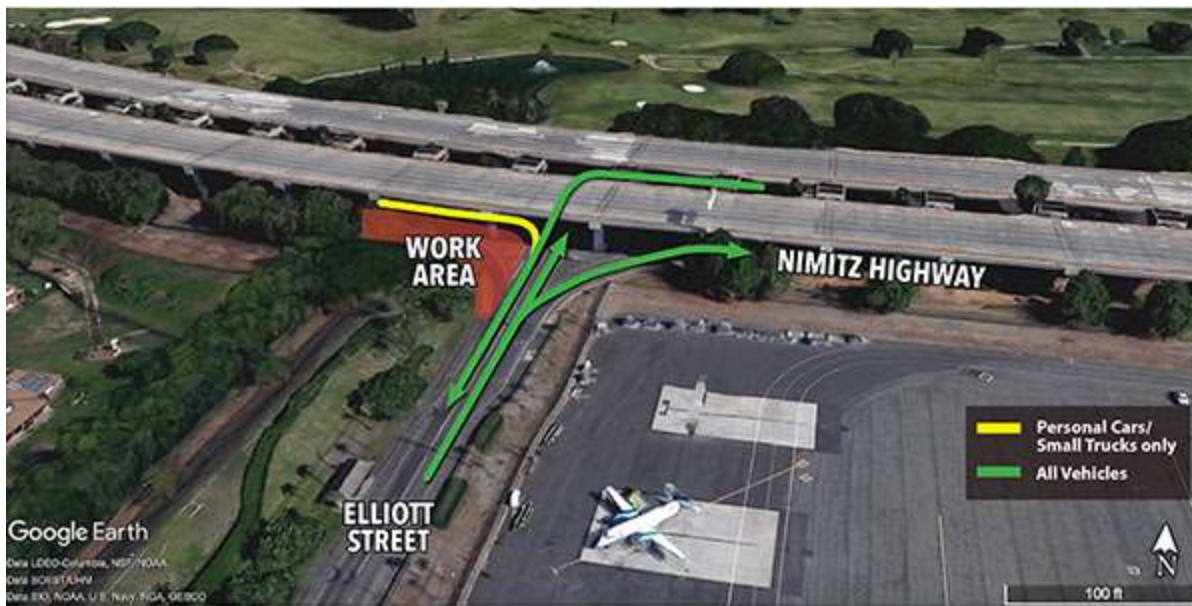
Nighttime: 8:00 p.m. to 4:00 a.m., overnights Monday to Friday

Up to two lanes of eastbound Nimitz Highway will be closed.

LOCATION: Elliott Street Intersection

24 Hours a Day, Seven Days a Week

The Nimitz Highway eastbound right turn pocket will be closed for large vehicles. Large vehicles will be detoured to the u-turn at Catlin Drive. Small vehicles traveling eastbound on Nimitz Highways will be able to execute the right turn onto Elliott Street from the outside lane. The westbound left turn pocket at Elliott Street will be maintained.



AOLELE STREET

Sunday, April 7, 2019 to Saturday, April 13, 2019

LOCATION: Airport Parking Garage Exit to H-1 On-Ramp

24 Hours a Day, Seven Days a Week

The right lane of Aolele Street eastbound between the airport parking garage exit and the H-1 on-ramp will be closed from April to June 2019. The right lane exiting the airport parking garages leading up to the toll booths will also be closed during the same period. Access to all toll booths, and the exit lane for the rental cars leaving the Consolidated Rental Car Center will remain open.

Nighttime: 9:00 p.m. to 5:00 a.m., overnights Monday to Friday morning

Up to two eastbound lanes on Aolele Street may be closed. Access to both Paiea Street and H-1 will remain open.



NIMITZ HIGHWAY

LOCATION: Keehi Lagoon Memorial Park to Kahauiki Village

24 Hours a Day, Seven Days a Week

Nimitz Highway eastbound between Keehi Lagoon Memorial Park and Kahauiki Village will be reduced to one lane for the duration of project construction.

Nighttime: 8:00 p.m. to 5:00 a.m., overnights Monday to Friday

All lanes of eastbound Nimitz Highway will be closed. Motorists will be detoured to Dillingham Boulevard to access Nimitz Highway. Local access will remain for residents of Kahauiki Village.

