

TRAFFIC UPDATE - Airport

Week of April 21, 2019

KAMEHAMEHA HIGHWAY – PEARL HARBOR AREA

Sunday, April 21, 2019 to Saturday, April 27, 2019

LOCATION: Ford Island Bridge/Salt Lake Boulevard to Kohomua Street

Daytime: 6:30 a.m. to 2:30 p.m., Monday to Friday

Alternating lanes of westbound Kamehameha Highway will be closed.

Daytime: 8:30 a.m. to 5:00 p.m., Monday to Friday

Alternating lanes of eastbound Kamehameha Highway will be closed.

Nighttime: 8:00 p.m. to 5:00 a.m., overnights Sunday to Saturday

Alternating lanes of eastbound Kamehameha Highway will be closed.

Nighttime: 8:00 p.m. to 5:00 a.m., overnights Sunday to Saturday

Alternating lanes of westbound Kamehameha Highway will be closed.

LOCATION: Kohomua Street to Arizona Memorial Place/Kalaloa Street

24 Hours a Day, Seven Days a Week

The inside lanes of eastbound Kamehameha Highway will be closed.

Daytime: 6:30 a.m. to 2:30 p.m., Monday to Friday

Alternating lanes of westbound Kamehameha Highway will be closed.

Daytime: 8:30 a.m. to 5:00 p.m., Monday to Friday

Alternating lanes of eastbound Kamehameha Highway will be closed.

Nighttime: 6:00 p.m. to 5:00 a.m., overnights Sunday to Saturday

Alternating lanes of eastbound Kamehameha Highway will be closed.

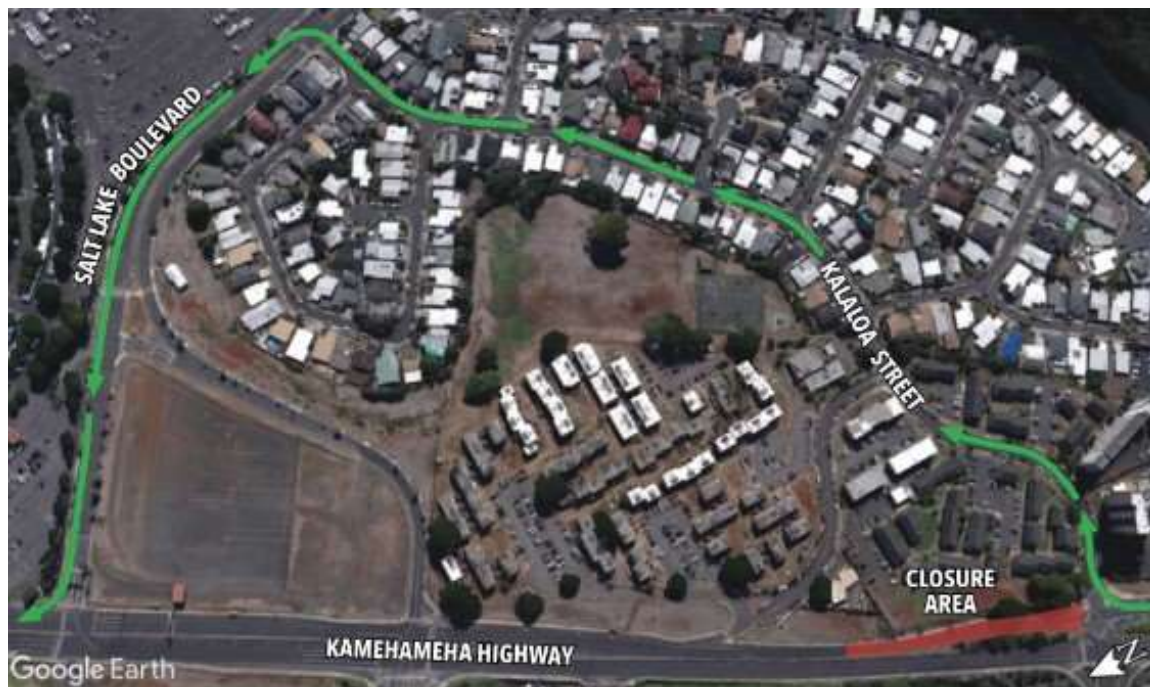
Nighttime: 8:00 p.m. to 5:00 a.m., overnights Sunday to Saturday

Alternating lanes of westbound Kamehameha Highway will be closed.

LOCATION: Kalaloa Street Intersection

Daytime: 6:00 a.m. to 6:00 p.m., Sunday April 21st and Saturday, April 27th

All westbound lanes on Kamehameha Highway will be closed. Motorists will be detoured onto Kalaloa Street, then Salt Lake Boulevard to access westbound Kamehameha Highway.



LOCATION: Arizona Memorial Place Intersection

Daytime: 6:00 a.m. to 6:00 p.m., Sunday April 21st and Saturday, April 27th

The left-turn from Arizona Memorial Place onto Kamehameha Highway westbound may be closed. Motorists will be detoured to Radford Drive and Center Drive to access Kamehameha Highway westbound.



LOCATION: Arizona Memorial Place/Kalaloa Street to Halawa Drive/Arizona Street

24 Hours a Day, Seven Days a Week

The inside lanes of eastbound Kamehameha Highway will be closed.

Daytime: 6:30 a.m. to 2:30 p.m., Monday to Friday

Alternating lanes of westbound Kamehameha Highway will be closed.

Daytime: 8:30 a.m. to 5:00 p.m., Monday to Friday

Alternating lanes of eastbound Kamehameha Highway will be closed.

Nighttime: 6:00 p.m. to 5:00 a.m., overnights Sunday to Saturday

Alternating lanes of eastbound Kamehameha Highway will be closed.

Nighttime: 8:00 p.m. to 5:00 a.m., overnights Sunday to Saturday

Alternating lanes of westbound Kamehameha Highway will be closed.

LOCATION: Halawa Drive/Arizona Street to Radford Drive/Makalapa Road

Daytime: 6:30 a.m. to 2:30 p.m., Monday to Friday

Alternating lanes of westbound Kamehameha Highway will be closed.

Daytime: 8:30 a.m. to 5:00 p.m., Monday to Friday

Alternating lanes of eastbound Kamehameha Highway will be closed.

LOCATION: Radford Drive/Makalapa Road to Plantation Drive/Center Drive

Daytime: 6:30 a.m. to 2:30 p.m., Monday to Friday

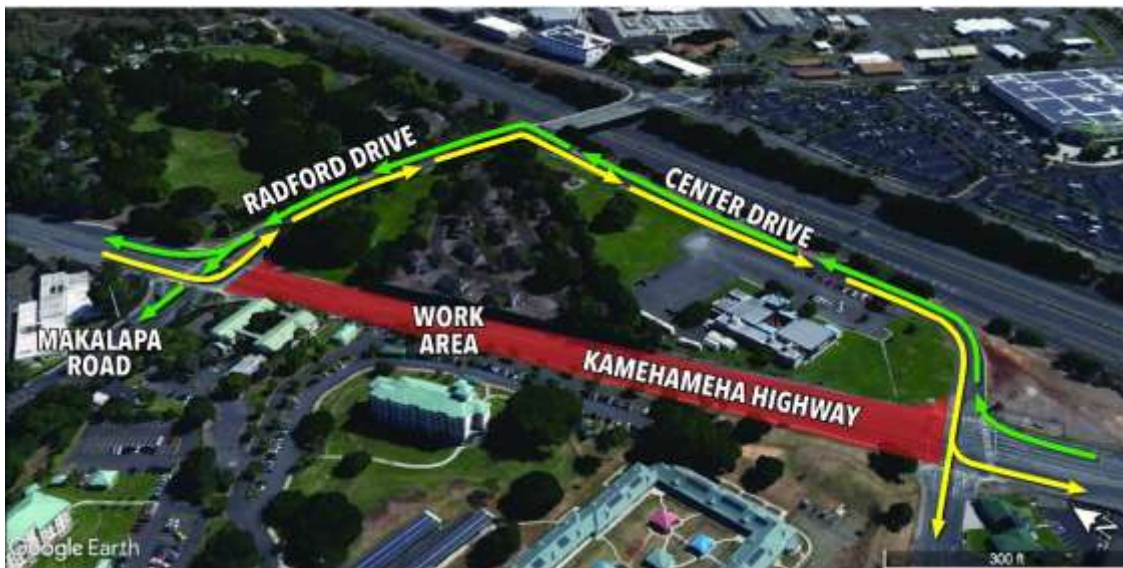
Alternating lanes of westbound Kamehameha Highway will be closed.

Daytime: 8:30 a.m. to 5:00 p.m., Monday to Friday

Alternating lanes of eastbound Kamehameha Highway will be closed.

Nighttime: 8:00 p.m. to 5:00 a.m., overnights Sunday to Saturday

All lanes of Kamehameha Highway in both westbound and eastbound directions will be closed between Radford Drive to Center Drive. Westbound motorists will be detoured to Center Drive then Radford Drive to return to Kamehameha Highway. Eastbound motorists will be detoured to Radford Drive then Center Drive to return to Kamehameha Highway.



For the safety of crews and the traveling public, the speed limit has been reduced to 25 mph on Kamehameha Highway between Salt Lake Boulevard/ Ford Island Bridge and Center Drive. The highway has been reduced to two lanes in each direction during construction. Bike lanes have been removed due to space constraints. Please drive safely; observe the posted speed limit, follow construction and directional signs, and share the road with bicyclists.

Bus routes and stops may be modified or closed during construction. Please call (808) 848-5555 or visit www.TheBus.org.

RADFORD DRIVE

Monday, April 22, 2019 to Friday, April 26, 2019

LOCATION: Kamehameha Highway to Center Drive

Daytime: 8:30 a.m. to 3:00 p.m., Monday to Friday

Radford Drive northbound between Kamehameha Highway and Center Drive will be closed. Two-way traffic will operate in the southbound lanes.

PEARL HARBOR INTERCHANGE

Sunday, April 21, 2019 to Saturday, April 27, 2019

LOCATION: Nimitz Highway Off-Ramp and Joint-Base Pearl Harbor-Hickam Off-Ramp to Kamehameha Highway

24 Hours a Day, Seven Days a Week

The ramp to westbound Kamehameha Highway from westbound H-1 Highway, westbound Nimitz Highway, and JBPHH exit will be reduced to three lanes for the duration of project construction.



LOCATION: Nimitz Highway to Kamehameha Highway

Nighttime: 8:00 p.m. to 5:00 a.m., overnights Sunday to Saturday

The Nimitz Highway westbound off-ramp to Kamehameha Highway westbound will be closed nightly. Motorists will be detoured to Valkenburgh Street, then to Bougainville Drive, then Radford Drive to return to Kamehameha Highway westbound.



LOCATION: Kamehameha Highway to H-1 Freeway On-Ramp

24 Hours a Day, Seven Days a Week

The eastbound ramp from Kamehameha Highway onto eastbound H-1 Highway will be reduced to one lane.

LOCATION: Kamehameha Highway to Nimitz Highway

24 Hours a Day, Seven Days a Week

The eastbound ramp from Kamehameha Highway onto eastbound Nimitz Highway will be reduced to one lane.

LOCATION: H-1 On-Ramp from Joint-Base Pearl Harbor-Hickam

24 Hours a Day, Seven Days a Week

The ramp from Joint-Base Pearl Harbor-Hickam onto eastbound H-1 Highway will be reduced to one lane.



NIMITZ HIGHWAY

Sunday, April 21, 2019 to Saturday, April 27, 2019

LOCATION: Pearl Harbor Interchange to Main Street

24 Hours a Day, Seven Days a Week

Eastbound Nimitz Highway will be reduced to two lanes.

LOCATION: Main Street to Aolele Street

Daytime: 8:00 a.m. to 3:00 p.m., Monday to Friday

Up to two lanes of eastbound Nimitz Highway will be closed.

Nighttime: 8:00 p.m. to 4:00 a.m., overnights Sunday to Saturday

Up to two lanes of eastbound Nimitz Highway will be closed.

ALA ONAONA STREET

Sunday, April 21, 2019 to Saturday, April 27, 2019

LOCATION: Between Terminal 1 and Ala Auana Street

Nighttime: 11:00 p.m. to 6:00 a.m., overnights Sunday to Saturday

Access to Ala Auana Street and the Lei Stand customer parking lot will be closed. All motorists needing access to the Consolidated Rental Car Facility (CONRAC) will be detoured through the arrivals level of the airport terminals to Ala Auana Street to access Ala Onaona/Aolele Street.



AOELE STREET

Sunday, April 21, 2019 to Saturday, April 27, 2019

LOCATION: Airport Parking Garage Exit to H-1 On-Ramp

24 Hours a Day, Seven Days a Week

The right lane of Aolele Street eastbound between the airport parking garage exit and the H-1 on-ramp will be closed from April to June 2019. The right lane exiting the airport parking garages leading up to the toll booths will also be closed during the same period. Access to all toll booths, and the exit lane for the rental cars leaving the Consolidated Rental Car Center will remain open.

Nighttime: 9:00 p.m. to 5:00 a.m., overnights Sunday to Saturday

Up to two eastbound lanes on Aolele Street may be closed. Access to both Paiea Street and H-1 will remain open.



NIMITZ HIGHWAY

Sunday, April 21, 2019 to Saturday, April 27, 2019

LOCATION: Keehi Lagoon Memorial Park to Kahauiki Village

24 Hours a Day, Seven Days a Week

Nimitz Highway eastbound between Keehi Lagoon Memorial Park and Kahauiki Village will be reduced to one lane for the duration of project construction.

Nighttime: 8:00 p.m. to 5:00 a.m., overnights Sunday to Saturday

All lanes of eastbound Nimitz Highway will be closed. Motorists will be detoured to Dillingham Boulevard to access Nimitz Highway. Local access will remain for residents of Kahauiki Village.

