

TRAFFIC UPDATE - Kamehameha Highway

Week of June 30, 2019

There will be no lane closures on Thursday, July 4, 2019 in observance of the Independence Day holiday. All 24/7 closures currently in place will remain during this time.

PEARL CITY

Sunday, June 30, 2019 to Saturday, July 6, 2019

LOCATION: Waiawa Road to Acacia Road

Daytime: 8:30 a.m. to 3:00 p.m., Monday to Wednesday and Friday

Alternating lanes of westbound Farrington Highway will be closed.

LOCATION: Waihona Street to Kuala Street

24 Hours a Day, Seven Days a Week

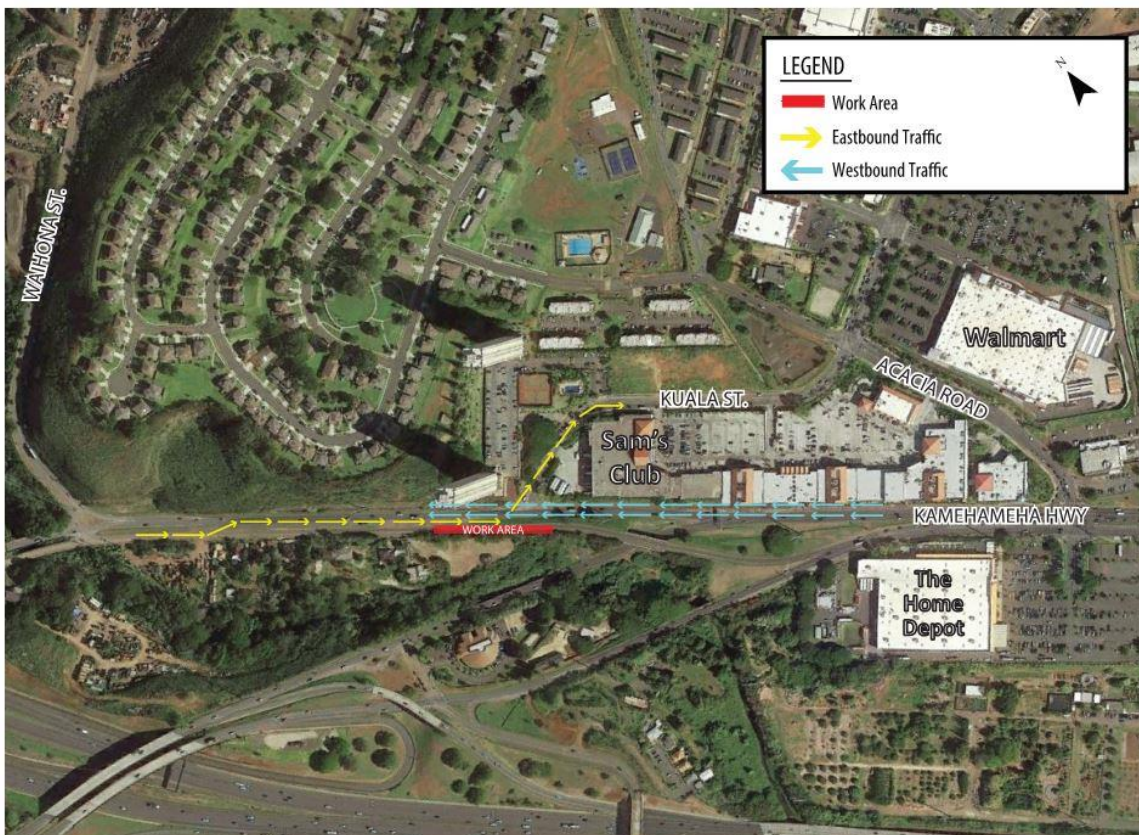
Eastbound motorists will be rerouted to a contraflow lane, then detoured to Kuala Street.

Daytime: 8:30 a.m. to 3:00 p.m., Monday to Wednesday and Friday

Alternating lanes of westbound Kamehameha Highway will be closed.

Daytime: 8:30 a.m. to 3:00 p.m., Monday to Wednesday and Friday

Alternating lanes of eastbound Kamehameha Highway will be closed.



LOCATION: Kuala Street to Acacia Road

Daytime: 8:30 a.m. to 3:00 p.m., Monday to Wednesday and Friday

Alternating lanes of westbound Kamehameha Highway will be closed.

Daytime: 8:30 a.m. to 3:00 p.m., Monday to Wednesday and Friday

Alternating lanes of eastbound Kamehameha Highway will be closed.

LOCATION: Acacia Road to Waimano Home Road

Daytime: 7:00 a.m. to 2:30 p.m., Monday to Wednesday and Friday

Alternating lanes of westbound Kamehameha Highway will be closed. The westbound left-turn lane may be reduced intermittently.

Daytime: 8:30 a.m. to 3:30 p.m., Monday to Wednesday and Friday

Alternating lanes of eastbound Kamehameha Highway will be closed. The eastbound left-turn lane may be reduced intermittently.

LOCATION: Waimano Home Road to Puu Momi Street

Daytime: 7:00 a.m. to 2:30 p.m., Monday to Wednesday and Friday

Alternating lanes of westbound Kamehameha Highway will be closed. The westbound left-turn lane may be reduced intermittently.

Daytime: 8:30 a.m. to 3:30 p.m., Monday to Wednesday and Friday

Alternating lanes of eastbound Kamehameha Highway will be closed. The eastbound left-turn lane may be reduced intermittently.

LOCATION: Puu Momi Street to Puu Poni Street

Daytime: 7:00 a.m. to 2:30 p.m., Monday to Wednesday and Friday

Alternating lanes of westbound Kamehameha Highway will be closed. The westbound left-turn lane may be reduced intermittently.

Daytime: 8:30 a.m. to 3:30 p.m., Monday to Wednesday and Friday

Alternating lanes of eastbound Kamehameha Highway will be closed. The eastbound left-turn lane may be reduced intermittently.

LOCATION: Puu Poni Street to Kuleana Road

Daytime: 7:00 a.m. to 2:30 p.m., Monday to Wednesday and Friday

Alternating lanes of westbound Kamehameha Highway will be closed.

Daytime: 8:30 a.m. to 3:30 p.m., Monday to Wednesday and Friday

Alternating lanes of eastbound Kamehameha Highway will be closed.

LOCATION: Kuleana Road to Kaahumanu Street

24 Hours a Day, Seven Days a Week

A single lane on westbound Kamehameha Highway will be closed.

Daytime: 7:00 a.m. to 2:30 p.m., Monday to Wednesday and Friday

Alternating lanes of westbound Kamehameha Highway will be closed. The westbound left-turn lane may be reduced intermittently.

Daytime: 8:30 a.m. to 3:30 p.m., Monday to Wednesday and Friday

Alternating lanes of eastbound Kamehameha Highway will be closed. The eastbound left-turn lane may be reduced intermittently.

Nighttime: 8:00 p.m. to 5:00 a.m., overnights Monday and Tuesday

Alternating lanes of westbound Kamehameha Highway will be closed. Turn restrictions may be in place to facilitate road surface repaving. Bus stops may be temporarily relocated. Detours will be in place for pedestrians and the traveling public.

Nighttime: 8:00 p.m. to 5:00 a.m., overnights Monday and Tuesday

Alternating lanes of eastbound Kamehameha Highway will be closed. Turn restrictions may be in place to facilitate road surface repaving. Bus stops may be temporarily relocated. Detours will be in place for pedestrians and the traveling public.

AIEA

Sunday, June 30, 2019 to Saturday, July 6, 2019

LOCATION: Kaahumanu Street to Hekaha Street

24 Hours a Day, Seven Days a Week

A single lane on westbound Kamehameha Highway will be closed.

Daytime: 7:00 a.m. to 2:30 p.m., Monday to Wednesday and Friday

Alternating lanes of westbound Kamehameha Highway will be closed. The westbound left-turn lane may be reduced intermittently.

Daytime: 8:30 a.m. to 3:30 p.m., Monday to Wednesday and Friday

Alternating lanes of eastbound Kamehameha Highway will be closed. The eastbound left-turn lane may be reduced intermittently.

Nighttime: 8:00 p.m. to 5:00 a.m., overnights Monday and Tuesday

Alternating lanes of westbound Kamehameha Highway will be closed. Turn restrictions may be in place to facilitate road surface repaving. Bus stops may be temporarily relocated. Detours will be in place for pedestrians and the traveling public.

Nighttime: 8:00 p.m. to 5:00 a.m., overnights Monday and Tuesday

Alternating lanes of eastbound Kamehameha Highway will be closed. Turn restrictions may be in place to facilitate road surface repaving. Bus stops may be temporarily relocated. Detours will be in place for pedestrians and the traveling public.

LOCATION: Hekaha Street to Kanuku Street

24 Hours a Day, Seven Days a Week

A single lane on westbound Kamehameha Highway will be closed.

Daytime: 7:00 a.m. to 2:30 p.m., Monday to Wednesday and Friday

Alternating lanes of westbound Kamehameha Highway will be closed. The westbound left-turn lane may be reduced intermittently.

Daytime: 8:30 a.m. to 3:30 p.m., Monday to Wednesday and Friday to Saturday

Up to two alternating lanes of eastbound Kamehameha Highway will be closed. Pedestrian sidewalks may also be closed to accommodate work. The eastbound left-turn lane may be reduced intermittently.

Nighttime: 8:00 p.m. to 5:00 a.m., overnights Monday and Tuesday

Alternating lanes of westbound Kamehameha Highway will be closed. Turn restrictions may be in place to facilitate road surface repaving. Bus stops may be temporarily relocated. Detours will be in place for pedestrians and the traveling public.

Nighttime: 8:00 p.m. to 5:00 a.m., overnights Monday and Tuesday

Alternating lanes of eastbound Kamehameha Highway will be closed. Turn restrictions may be in place to facilitate road surface repaving. Bus stops may be temporarily relocated. Detours will be in place for pedestrians and the traveling public.

LOCATION: Kanuku Street to Kaonohi Street

24 Hours a Day, Seven Days a Week

One of the right-turn lanes from southbound Kaonohi Street onto westbound Kamehameha Highway will be closed. The middle lane of westbound Kamehameha Highway will be closed. Please be aware of traffic pattern changes in this area. Two travel lanes on Kamehameha Highway will remain open during peak travel times.

Daytime: 7:00 a.m. to 2:30 p.m., Monday to Wednesday and Friday to Saturday

Alternating lanes of westbound Kamehameha Highway will be closed. Pedestrian sidewalks may also be closed to accommodate work. The westbound left-turn lane may be reduced intermittently.

Daytime: 8:30 a.m. to 3:30 p.m., Monday to Wednesday and Friday to Saturday

Up to two alternating lanes of eastbound Kamehameha Highway will be closed. Pedestrian sidewalks may also be closed to accommodate work. The eastbound left-turn lane may be reduced intermittently.

LOCATION: Kaonohi Street to Lipoa Place

Daytime: 7:00 a.m. to 2:30 p.m., Monday to Wednesday and Friday

Alternating lanes of westbound Kamehameha Highway will be closed. The westbound left-turn lane may be reduced intermittently.

Daytime: 8:30 a.m. to 3:30 p.m., Monday to Wednesday and Friday

Alternating lanes of eastbound Kamehameha Highway will be closed. The eastbound left-turn lane may be reduced intermittently.

Nighttime: 7:00 p.m. to 6:00 a.m., overnights Monday and Tuesday

Alternating lanes of westbound Kamehameha Highway will be closed. Turn restrictions may be in place to facilitate road surface repaving. Bus stops may be temporarily relocated. Detours will be in place for pedestrians and the traveling public.

Nighttime: 7:00 p.m. to 5:00 a.m., overnights Monday and Tuesday

Alternating lanes of eastbound Kamehameha Highway will be closed. Turn restrictions may be in place to facilitate road surface repaving. Bus stops may be temporarily relocated. Detours will be in place for pedestrians and the traveling public.

LOCATION: Lipoa Place to Pali Momi Street

Daytime: 7:00 a.m. to 2:30 p.m., Monday to Wednesday and Friday

Alternating lanes of westbound Kamehameha Highway will be closed. The westbound left-turn lane may be reduced intermittently.

Daytime: 8:30 a.m. to 3:30 p.m., Monday to Wednesday and Friday

Alternating lanes of eastbound Kamehameha Highway will be closed. The eastbound left-turn lane may be reduced intermittently.

Nighttime: 7:00 p.m. to 6:00 a.m., overnights Monday and Tuesday

Alternating lanes of westbound Kamehameha Highway will be closed. Turn restrictions may be in place to facilitate road surface repaving. Bus stops may be temporarily relocated. Detours will be in place for pedestrians and the traveling public.

Nighttime: 7:00 p.m. to 5:00 a.m., overnights Monday and Tuesday

Alternating lanes of eastbound Kamehameha Highway will be closed. Turn restrictions may be in place to facilitate road surface repaving. Bus stops may be temporarily relocated. Detours will be in place for pedestrians and the traveling public.

LOCATION: Pali Momi Street to Honomanu Street

Daytime: 7:00 a.m. to 2:30 p.m., Monday to Wednesday and Friday

Up to two alternating lanes of westbound Kamehameha Highway will be closed. The westbound left-turn lane may be reduced intermittently.

Daytime: 8:30 a.m. to 3:30 p.m., Monday to Wednesday and Friday

Alternating lanes of eastbound Kamehameha Highway will be closed. The eastbound left-turn lane may be reduced intermittently.

Nighttime: 7:00 p.m. to 6:00 a.m., overnights Monday and Tuesday

Alternating lanes of westbound Kamehameha Highway will be closed. Turn restrictions may be in place to facilitate road surface repaving. Bus stops may be temporarily relocated. Detours will be in place for pedestrians and the traveling public.

Nighttime: 7:00 p.m. to 5:00 a.m., overnights Monday and Tuesday

Alternating lanes of eastbound Kamehameha Highway will be closed. Turn restrictions may be in place to facilitate road surface repaving. Bus stops may be temporarily relocated. Detours will be in place for pedestrians and the traveling public.

LOCATION: Honomanu Street to Salt Lake Boulevard

Daytime: 7:00 a.m. to 2:30 p.m., Monday to Wednesday and Friday

Alternating lanes of westbound Kamehameha Highway will be closed. The westbound left-turn lane may be reduced intermittently.

Daytime: 8:30 a.m. to 3:30 p.m., Monday to Wednesday and Friday

Alternating lanes of eastbound Kamehameha Highway will be closed.

Nighttime: 7:00 p.m. to 6:00 a.m., overnights Monday and Tuesday

Alternating lanes of westbound Kamehameha Highway will be closed. Turn restrictions may be in place to facilitate road surface repaving. Bus stops may be temporarily relocated. Detours will be in place for pedestrians and the traveling public.

Nighttime: 7:00 p.m. to 5:00 a.m., overnights Monday and Tuesday

Alternating lanes of eastbound Kamehameha Highway will be closed. Turn restrictions may be in place to facilitate road surface repaving. Bus stops may be temporarily relocated. Detours will be in place for pedestrians and the traveling public.

LOCATION: Salt Lake Boulevard Outbound to Salt Lake Boulevard Inbound

24 Hours a Day, Seven Days a Week

The left lane of westbound Kamehameha Highway and the left lane of eastbound Kamehameha Highway will be closed between Salt Lake Boulevard outbound and Salt Lake Boulevard inbound. One of the pedestrian sidewalks along Salt Lake Boulevard will be closed. Detours will be in place for pedestrians.

Daytime: 8:30 a.m. to 3:00 p.m., Monday to Wednesday and Friday

Alternating lanes of westbound Kamehameha Highway will be closed.

Daytime: 8:30 a.m. to 3:00 p.m., Monday to Wednesday and Friday

Alternating lanes of eastbound Kamehameha Highway will be closed. The eastbound left-turn lane may be reduced intermittently.

Daytime: 8:30 a.m. to 3:30 p.m., Monday to Wednesday and Friday

Alternating lanes of Salt Lake Boulevard will be closed. The eastbound left-turn lane from Salt Lake Boulevard onto Kamehameha Highway may be reduced intermittently.

Noise Impact: During potholing, vac truck, drilling and excavation work, expect increased noise levels from the unloading of materials and general machinery sounds. Shoulder and median work signage/cones along the side of the road will mark the work area. Motorists are advised to drive with caution and provide a safe distance between their vehicles, the construction workers and equipment.

Note: Due to overhead crane work, traffic may be stopped intermittently due to safety for commuters and pedestrians.