

# TRAFFIC UPDATE - Kamehameha Highway

**Week of July 7, 2019**

## **PEARL CITY**

**Sunday, July 7, 2019 to Saturday, July 13, 2019**

### **LOCATION: Waiawa Road to Acacia Road**

**Daytime: 8:30 a.m. to 3:00 p.m., Monday to Friday**

Alternating lanes of westbound Farrington Highway will be closed.

### **LOCATION: Waihona Street to Kuala Street**

**24 Hours a Day, Seven Days a Week**

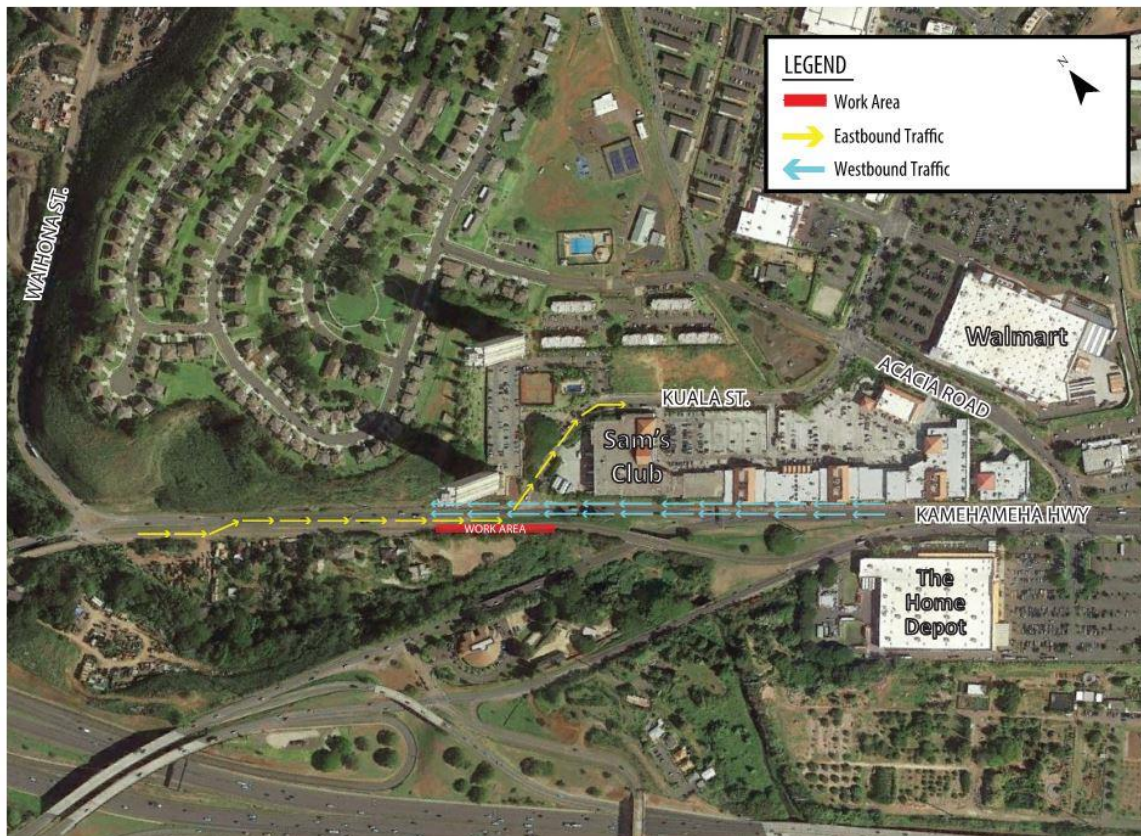
Eastbound motorists will be rerouted to a contraflow lane, then detoured to Kuala Street.

**Daytime: 8:30 a.m. to 3:00 p.m., Monday to Friday**

Alternating lanes of westbound Kamehameha Highway will be closed.

**Daytime: 8:30 a.m. to 3:00 p.m., Monday to Friday**

Alternating lanes of eastbound Kamehameha Highway will be closed.



### **LOCATION: Kuala Street to Acacia Road**

**Daytime: 8:30 a.m. to 3:00 p.m., Monday to Friday**

Alternating lanes of westbound Kamehameha Highway will be closed.

**Daytime: 8:30 a.m. to 3:00 p.m., Monday to Friday**

Alternating lanes of eastbound Kamehameha Highway will be closed.

### **LOCATION: Acacia Road to Lehua Avenue**

**Nighttime: 7:00 p.m. to 5:00 a.m., overnights Monday to Friday morning**

The outside eastbound lane of Kamehameha Highway will be closed. Pedestrian access will be maintained.

**LOCATION: Acacia Road to Waimano Home Road**

**Daytime: 7:00 a.m. to 2:30 p.m., Monday to Friday**

Alternating lanes of westbound Kamehameha Highway will be closed. The westbound left-turn lane may be reduced intermittently.

**Daytime: 8:30 a.m. to 3:30 p.m., Monday to Friday**

Alternating lanes of eastbound Kamehameha Highway will be closed. The eastbound left-turn lane may be reduced intermittently.

**LOCATION: Waimano Home Road to Puu Momi Street**

**Daytime: 7:00 a.m. to 2:30 p.m., Monday to Friday**

Alternating lanes of westbound Kamehameha Highway will be closed. The westbound left-turn lane may be reduced intermittently.

**Daytime: 8:30 a.m. to 3:30 p.m., Monday to Friday**

Alternating lanes of eastbound Kamehameha Highway will be closed. The eastbound left-turn lane may be reduced intermittently.

**LOCATION: Puu Momi Street to Puu Poni Street**

**Daytime: 7:00 a.m. to 2:30 p.m., Monday to Friday**

Alternating lanes of westbound Kamehameha Highway will be closed. The westbound left-turn lane may be reduced intermittently.

**Daytime: 8:30 a.m. to 3:30 p.m., Monday to Friday**

Alternating lanes of eastbound Kamehameha Highway will be closed. The eastbound left-turn lane may be reduced intermittently.

**LOCATION: Puu Poni Street to Kuleana Road**

**Daytime: 7:00 a.m. to 2:30 p.m., Monday to Friday**

Alternating lanes of westbound Kamehameha Highway will be closed.

**Daytime: 8:30 a.m. to 3:30 p.m., Monday to Friday**

Alternating lanes of eastbound Kamehameha Highway will be closed.

**LOCATION: Kuleana Road to Kaahumanu Street**

**24 Hours a Day, Seven Days a Week**

A single lane on westbound Kamehameha Highway will be closed.

**Daytime: 7:00 a.m. to 2:30 p.m., Monday to Friday**

Alternating lanes of westbound Kamehameha Highway will be closed. The westbound left-turn lane may be reduced intermittently.

**Daytime: 8:30 a.m. to 3:30 p.m., Monday to Friday**

Alternating lanes of eastbound Kamehameha Highway will be closed. The eastbound left-turn lane may be reduced intermittently.

**Nighttime: 8:00 p.m. to 5:00 a.m., overnights Sunday to Friday**

Alternating lanes of westbound Kamehameha Highway will be closed. Turn restrictions may be in place to facilitate road surface repaving. Bus stops may be temporarily relocated. Detours will be in place for pedestrians and the traveling public.

**Nighttime: 8:00 p.m. to 5:00 a.m., overnights Sunday to Friday**

Alternating lanes of eastbound Kamehameha Highway will be closed. Turn restrictions may be in place to facilitate road surface repaving. Bus stops may be temporarily relocated. Detours will be in place for pedestrians and the traveling public.

**AIEA**

**Sunday, July 7, 2019 to Saturday, July 13, 2019**

**LOCATION: Kaahumanu Street to Hekaha Street**

**24 Hours a Day, Seven Days a Week**

A single lane on westbound Kamehameha Highway will be closed.

**Daytime: 7:00 a.m. to 2:30 p.m., Monday to Friday**

Alternating lanes of westbound Kamehameha Highway will be closed. The westbound left-turn lane may be reduced intermittently.

**Daytime: 8:30 a.m. to 3:30 p.m., Monday to Friday**

Alternating lanes of eastbound Kamehameha Highway will be closed. The eastbound left-turn lane may be reduced intermittently.

**Nighttime: 8:00 p.m. to 5:00 a.m., overnights Sunday to Friday**

Alternating lanes of westbound Kamehameha Highway will be closed. Turn restrictions may be in place to facilitate road surface repaving. Bus stops may be temporarily relocated. Detours will be in place for pedestrians and the traveling public.

**Nighttime: 8:00 p.m. to 5:00 a.m., overnights Sunday to Friday**

Alternating lanes of eastbound Kamehameha Highway will be closed. Turn restrictions may be in place to facilitate road surface repaving. Bus stops may be temporarily relocated. Detours will be in place for pedestrians and the traveling public.

**LOCATION: Hekaha Street to Kanuku Street**

**24 Hours a Day, Seven Days a Week**

A single lane on westbound Kamehameha Highway will be closed.

**Daytime: 7:00 a.m. to 2:30 p.m., Monday to Friday**

Alternating lanes of westbound Kamehameha Highway will be closed. The westbound left-turn lane may be reduced intermittently.

**Daytime: 8:30 a.m. to 3:30 p.m., Monday to Saturday**

Up to two alternating lanes of eastbound Kamehameha Highway will be closed. Pedestrian sidewalks may also be closed to accommodate work. The eastbound left-turn lane may be reduced intermittently.

**Nighttime: 8:00 p.m. to 5:00 a.m., overnights Sunday to Friday**

Alternating lanes of westbound Kamehameha Highway will be closed. Turn restrictions may be in place to facilitate road surface repaving. Bus stops may be temporarily relocated. Detours will be in place for pedestrians and the traveling public.

**Nighttime: 8:00 p.m. to 5:00 a.m., overnights Sunday to Friday**

Alternating lanes of eastbound Kamehameha Highway will be closed. Turn restrictions may be in place to facilitate road surface repaving. Bus stops may be temporarily relocated. Detours will be in place for pedestrians and the traveling public.

**LOCATION: Kanuku Street to Kaonohi Street**

**24 Hours a Day, Seven Days a Week**

One of the right-turn lanes from southbound Kaonohi Street onto westbound Kamehameha Highway will be closed. The middle lane of westbound Kamehameha Highway will be closed. Please be aware of traffic pattern changes in this area. Two travel lanes on Kamehameha Highway will remain open during peak travel times.

**Daytime: 7:00 a.m. to 2:30 p.m., Monday to Saturday**

Alternating lanes of westbound Kamehameha Highway will be closed. Pedestrian sidewalks may also be closed to accommodate work. The westbound left-turn lane may be reduced intermittently.

**Daytime: 8:30 a.m. to 3:30 p.m., Monday to Saturday**

Up to two alternating lanes of eastbound Kamehameha Highway will be closed. Pedestrian sidewalks may also be closed to accommodate work. The eastbound left-turn lane may be reduced intermittently.

**LOCATION: Kaonohi Street to Lipoa Place**

**Daytime: 7:00 a.m. to 2:30 p.m., Monday to Friday**

Alternating lanes of westbound Kamehameha Highway will be closed. The westbound left-turn lane may be reduced intermittently.

**Daytime: 8:30 a.m. to 3:30 p.m., Monday to Friday**

Alternating lanes of eastbound Kamehameha Highway will be closed. The eastbound left-turn lane may be reduced intermittently.

**LOCATION: Lipoa Place to Pali Momi Street**

**Daytime: 7:00 a.m. to 2:30 p.m., Monday to Friday**

Alternating lanes of westbound Kamehameha Highway will be closed. The westbound left-turn lane may be reduced intermittently.

**Daytime: 8:30 a.m. to 3:30 p.m., Monday to Friday**

Alternating lanes of eastbound Kamehameha Highway will be closed. The eastbound left-turn lane may be reduced intermittently.

**LOCATION: Pali Momi Street to Honomanu Street**

**Daytime: 7:00 a.m. to 2:30 p.m., Monday to Friday**

Up to two alternating lanes of westbound Kamehameha Highway will be closed. The westbound left-turn lane may be reduced intermittently.

**Daytime: 8:30 a.m. to 3:30 p.m., Monday to Friday**

Alternating lanes of eastbound Kamehameha Highway will be closed. The eastbound left-turn lane may be reduced intermittently.

**LOCATION: Honomanu Street to Salt Lake Boulevard**

**Daytime: 7:00 a.m. to 2:30 p.m., Monday to Friday**

Alternating lanes of westbound Kamehameha Highway will be closed. The westbound left-turn lane may be reduced intermittently.

**Daytime: 8:30 a.m. to 3:30 p.m., Monday to Friday**

Alternating lanes of eastbound Kamehameha Highway will be closed.

**LOCATION: Salt Lake Boulevard Outbound to Salt Lake Boulevard Inbound**

**24 Hours a Day, Seven Days a Week**

One of the pedestrian sidewalks along Salt Lake Boulevard may be closed. Detours will be in place for pedestrians.

**Daytime: 8:30 a.m. to 3:00 p.m., Monday to Friday**

Alternating lanes of westbound Kamehameha Highway will be closed.

**Daytime: 8:30 a.m. to 3:00 p.m., Monday to Friday**

Alternating lanes of eastbound Kamehameha Highway will be closed. The eastbound left-turn lane may be reduced intermittently.

**Daytime: 8:30 a.m. to 3:30 p.m., Monday to Friday**

Alternating lanes of Salt Lake Boulevard will be closed. The eastbound left-turn lane from Salt Lake Boulevard onto Kamehameha Highway may be reduced intermittently.

**Noise Impact: During potholing, vac truck, drilling and excavation work, expect increased noise levels from the unloading of materials and general machinery sounds.** *Shoulder and median work signage/cones along the side of the road will mark the work area. Motorists are advised to drive with caution and provide a safe distance between their vehicles, the construction workers and equipment.*

**Note: Due to overhead crane work, traffic may be stopped intermittently due to safety for commuters and pedestrians.**